

COASTWISE

COASTWISE CAFÉS – PHASE 4

A full report of findings

August 2025



**NORTH
NORFOLK
DISTRICT
COUNCIL**



Department
for Environment
Food & Rural Affairs



**Environment
Agency**

Version	Originator	Description including reason for changes	Date
0.1	Sue Grime	First draft	July 2025
0.2	Sophie Day and Chloe Suttle	Revisions	19.08.25
0.3	Sophie Day	Final changes	26.08.25

This project is funded by Defra as part of the £200 million Flood and Coastal Innovation Programmes which is managed by the Environment Agency. The programmes will drive innovation in flood and coastal resilience and adaptation to a changing climate.

Contents

Introduction	2
How we sought to deliver the aims of the Phase 4 Coastwise cafés:	2
Overstrand	5
Comments and discussion points	5
Map capture - Overstrand	8
Trimingham	9
Map capture - Trimingham	11
Happisburgh (two cafés – outputs combined)	12
Map capture - Happisburgh	14
Phase four team reflections, learning and actions	15
Event evaluation	17
Summary and next steps	17
Event photographs	18

Introduction

In June 2025 Coastwise held the fourth phase of Coastwise cafés.

- Overstrand – Monday 9 June, Parish Hall, 9.30-1: 23 visitors.
- Trimingham – Thursday 12 June, Community Hall, 1:30-4:30: 15 visitors.
- Happisburgh – Friday 13 June, School hall, 2.30-4.30: 24 visitors.
- Happisburgh – Saturday 14 June, School hall, 9.30-1.30: 16 visitors.

A total of 78 people attended, a mix of new and repeat visitors.

Norfolk and Waveney Mind attended all the café events to speak people about their wellbeing and to offer their support package that they deliver on behalf of Coastwise.

Many of the established local 'liaison' group members, ward members, coastal portfolio holder, parish council members and other councillors also attended.

The aims of this Phase 4 of the cafés were:

- A. To provide project updates on local to national work undertaken, work in progress and coming soon
- B. To promote an awareness of the new NCERM risk maps and provide an opportunity to view these
- C. To attract sign-ups to participate in the upcoming community transition planning process
- D. To capture a wider demographic of visitors than have previously attended
- E. To build coastal erosion literacy

Please refer to previous Coastwise café reports for more information about the rationale for the café approach and detail of the methodology.

How we sought to deliver the aims of the Phase 4 Coastwise cafés:

A. To provide project updates on local to national work undertaken, work in progress and coming soon:

- We prepared an update poster to capture both place specific activities and wider work (see Figure 1).
- Where relevant, we included locally specific content. For example, the findings from the Rock and Ramp investigations at Happisburgh and at Overstrand, a member of the coastal management team on hand to update visitors on issues to do with the sea wall and promenade.
- In conversations with visitors, we asked about people's interests and actively pointed them to various information and activities.
- We ensured that the content would be appropriate for different degrees of readiness and engagement - repeat visitors and those who are well engaged with us, and first-time visitors new to the project.

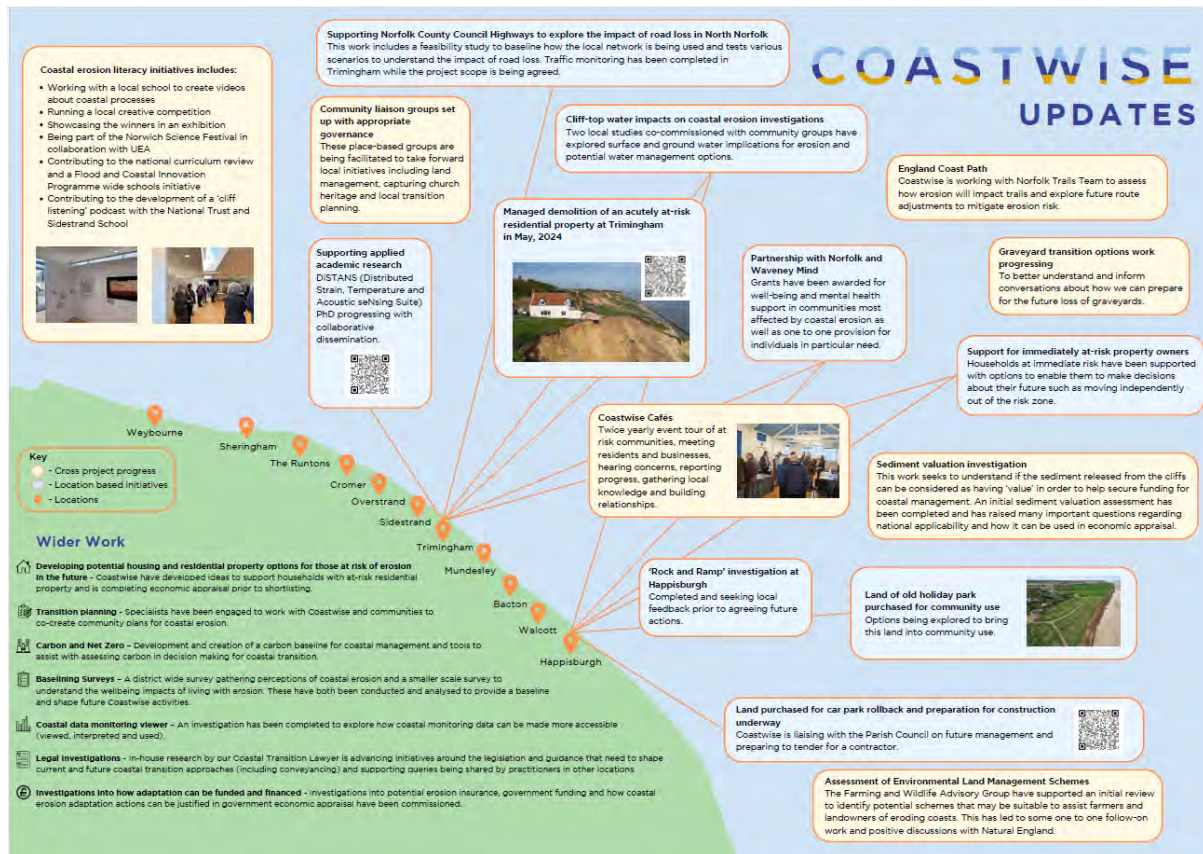


FIGURE 1. THE COASTWISE PROJECT UPDATE POSTER USED IN THE PHASE 4 COASTWISE CAFÉS - JUNE 2025

B. To promote an awareness of the new NCERM risk maps and provide an opportunity to view these:

- We introduced the new National Coastal Erosion Risk Mapping (NCERM) with a poster of explanation.
- We had a laptop available, to show people the latest risk mapping for coastal erosion, which includes climate scenarios and the impacts of sea level rise
- We prepared local risk overlays to demonstrate the 2105 risk with and without climate change for our key locations (these replaced ones we have used previously using the SMP risk information, also available in our updated project photobook).

C. To attract sign-ups to participate in the upcoming local community transition planning process:

Context: Over the coming months, we are working with consultants to help us co-create transition plans with communities that will prepare them for coastal change in the future. The plans will be different in different places, but broadly, will seek to capture what is at risk, the impact of likely losses on communities, and create a timeline of practical actions and options for the short, medium and longer term that will enable adaptation and resilience.

- We made a poster explaining the upcoming transition planning process.
- We created a GDPR compliant sign-up sheet and confidential box for these.
- In Trimmingham and Happisburgh our existing Coastwise community groups kindly attended to talk to people about progress and activities within the groups, and at Overstrand a member of the Parish Council where a group is being set up attended the whole session. Through meeting the Coastwise team and other members of the community who are working actively with Coastwise, we were hoping to encourage

more people to become involved in these groups as well as in the transition planning process.

D. To capture a wider demographic of visitors than have previously attended:

Context: In the past, visitors have predominantly been retired (reflective of the local demographic make-up). This time we wanted to create more opportunity for working age and young people to attend.

- We took up the offer of use of Happisburgh School hall to trial-run a café immediately after school on a Friday afternoon, in order to attract children and their families (a hard-to-reach audience with low local representation in the demographic data).
- We ran a café on a Saturday as we know that this has previously enabled working-age people to visit us.
- We invited the beach hut tenants in Overstrand as they are currently adversely affected by recent cliff falls onto the promenade that is restricting their access and use of the huts. We had been advised previously that we should engage directly.
- We ran one of the morning cafés for a longer time window to capture a lunchtime, as we had been previously asked to do this to enable those working from home to come along in their lunchbreak.
- We included a mixture of content ranging from very general to very technical, to cover all interests and levels of literacy.
- As we have done previously, we included content specifically for children – Duplo, colouring sheets, puzzles, stickers, fossils, and other items.

E. To build coastal erosion literacy

- We included reproductions of the Coastwise Creative Competition exhibits as a different element of interest and talking point.
- We gave out many copies of our in-house Coastal Erosion Explorers pack booklets.
- We included interactive exhibits produced in collaboration with UEA for use at the Norwich Science Festival in February: Firstly, the 3D Trimmingham cliff model. This shows very well an array of coastal erosion and dynamic cliff processes. We continue to find it a good talking point and of interest to members of the public. We have developed a 'cliff spotters' activity alongside this item to encourage interaction with it. Secondly, the giant 'Cliff Jenga'. This presents an opportunity for people to learn more about the different sediments that make up coastal cliffs, why some move or erode more easily than others because of frictional / cohesional properties including with the addition of water from drainage or the sea.

Overstrand

Parish Hall, Monday 9th June, 9:30-13:00

- 23 visitors.
- A dull, drizzly day.
- Coastal engineer in attendance to answer questions and provide updates on prom closure and sea wall works. Norfolk and Waveney Mind also attended. Ward member and Parish Council members visited.
- Mix M/F
- Mainly retired but a few of working age.
- Average stay estimated to be approx. 45 mins - 1 hour.

Comments and discussion points

These points were assembled from written sticky notes contributed by visitors and notes taken by the team on the basis of the discussions they had during the session. They have been grouped and themed according to what arose in conversations on the day:

- Sea wall and promenade
- Transition planning
- Risk Mapping
- Access and connectivity
- Housing
- Water management
- Other (peripheral to Coastwise)
- Comms and engagement reflections and actions

Sea wall and promenade

Context: Some transitional maintenance works to extend the life of the sea wall, where the structure is beginning to fail have been approved by NNDC's Cabinet. At the time of the café, funding was being secured to enable these to be implemented in the autumn of 2025. Additionally, a large cliff slip containing Japanese Knotweed had led to the closure of the promenade some weeks before. Access along the sea wall/promenade remained/remains closed until an appropriate approach to dealing with this is identified. At the time of the café, the team were awaiting the results of a study into the most appropriate and cost-effective way of clearing and disposing of this – after which an onward plan can be developed.

Comments and reflections:

- There was a lot of interest in, and discussion with visitors at this café (as expected), about the sea wall issues and maintenance, cliff slip and prom closure, and approach to dealing with the Japanese Knotweed.
- People know about the knotweed but were generally unaware of the legalities, cost and other difficulties associated with its removal and limiting its spread. When explained, they quickly understood why the slip debris could not easily and quickly be removed.
- It was useful to have one of the coastal management team engineers present for the whole session to answer questions, as well as visits from council members who could also talk to residents about these issues.
- Key questions asked:
 - When will the prom be opened again?
 - Why can't the debris be cleared?

- Questions about the condition of the prom/seawall and works to maintain – what will these be and when?
- Many people raised issue of access to beach huts. Beach hut owners are frustrated that the prom remains closed, as this restricts access from the west of the village.
- The cliff slip happened just after the beach hut tenants paid their rent for the year. Some suggested giving a discount as it is a long walk round to access the huts from the east.
- Suggestion that NNDC suspend the dog restrictions so dog walkers can get round on the beach when the tide is low – also good for visitors.
- What will happen to the beach huts when work on the sea wall is done? And further into the future?

Transition planning

- A member of the public who attended the Coastwise talk at Cromer Museum in April came to this café to sign up to be part of transition planning in Overstrand.
- General discussion around transition and a few sign-ups to join sub-committee group.
- Good sign-ups for transition planning – people (esp. Parish Council) are very keen to get on with developing a practical transition plan and delivering actions.

Risk mapping

- What is the timing for erosion at Overstrand – how long have we got?
- Explored the new maps with some residents, lots of interest.
- Chatted to a fisherman about the potential impact of the risk on them.

Access and connectivity

- See also sea wall and promenade section above
- Any plans for using steps down to the prom rather than the steep concrete slopes?
- A Parish Councillor is interested in applying for a grant to investigate possible action to implement a safer path or steps where the hotel used to be – Coastwise to share grants information.

Housing

- One discussion about the Happisburgh houses built via Pathfinder, about the costs and how these were unaffordable to local people.

Water management

- Boreholes are no longer maintained – causing problems with surface water

Other (peripheral to Coastwise)

- Wider issues around jet skiing at Overstrand and crab breeding cages

Comms and engagement reflections and actions from this café

- Promotion of café – coverage apparently not as good as it has been previously. For future reference, the Parish Council has keys to 6 locked parish notice boards.
- In future, Coastwise to provide hard copies of A4 posters x 6 to them to put up as well as usual shop and café points in village. Also leaflets for distribution.
- Beach hut owners/tenants did attend at Overstrand (targeted directly via an invitation sent from NNDC's email list – this appears to have been effective). This was an approach suggested by a visitor in a previous café.
- Repeat this approach for future cafés anywhere there are beach huts.
- Village maps still a strong focus for discussion at the cafés – ongoing useful reference point and consistently being populated by new café attendees.
- Continue to use high resolution OS area maps as reference/discussion points in future events.
- Norfolk and Waveney Mind are very keen to provide wellbeing support in Overstrand in their next funding bid to the Coastwise Community Grant.
- Shared interests Although the cafés are held in each village to target each community, there does appear to be a diffusion of information, knowledge and experience across the NNDC area, and people are interested in issues that aren't necessarily specific to their village.

Map capture - Overstrand



Colour	Number	Comment
Red	1	Coast path is impassable at top of cliff steps by the village.
	2	Fly tipping of garden waste over the cliff.
	3	Re-routing of cliff path inland between deep history coast and road.
	4	Lack of access along cliff - divides the village. What are the options for a walkway or bridge?
	5	Not been able to use beach hut much due to difficulty accessing, with prom being closed. Refund?
	6	Apron is dangerous and slippery but people are suing whilst prom is closed.
	7	Pond – don't know where the overflow goes or how this pond is fed – to be included in any water investigations.
	8	Water causing cliff collapse – include in any investigations. Cliff water.
	9	Revisit path in transition planning – what's the land ownership/ How could this be done?
	10	Or alternative – e.g. steps down. What are the potential solutions?
	11	Steps down – when or if they will be open?
	ACTION	Ask coastal engineers for bore hole maps of Overstrand and underground water courses.
Yellow	1	Runoff during storms into the village. What NFM could be done along here? Willow planting etc?
	2	Any possibility of steps down to this beach area?

Trimingham

Community Hall, Thursday 12th June, 13:30-16:30

- 15 visitors.
- A sunny day.
- Local group members attended for the full duration. Council leader, coastal portfolio holder and some local ward members attended. Norfolk and Waveney Mind attended.
- The majority were return visitors (i.e. had been to a Coastwise café before).
- Approximately equal M/F.
- Apparently of retirement age.
- Average stay estimated to be at least 1.5 hours.

Comments and discussion points

These points were assembled from written sticky notes contributed by visitors and notes taken by the team based on the discussions they had during the session. They have been grouped and themed according to what arose in conversations on the day:

- Erosion risk mapping
- Cliff top water management
- Transition planning
- Road at risk
- Housing
- Coastal management – existing defences
- Funding
- Comms and engagement reflections from this café

Erosion risk mapping and climate change

- Conversations with attendees about the NCERM data and risk mapping. Explained the UK Climate Projections 2018 percentiles and what the maps show.
- Pointed people in the direction of the SMP Explorer and NCERM data.
- Conversation about climate change and weather and variations each year.
- Had a long and engaging conversation with a local resident who provided lots of useful information about how they related to the coastal erosion risk map, e.g. they had identified their house as outside the erosion risk zone, but a family member has bought a house close to the 2105 worst case scenario.
- The visual overlays of projected erosion risk may need a bit more contextual information included on them.

Cliff top water management

- Keen to move forward with next things.
- The local group is keen to progress the ponds restoration projects – need to in principle agree grants and support on consents.
- Conversations with two attendees about the River Mun and where main river was and the other tributaries and watercourses.
- Asked about potential support to connect to main sewer rather than soak away...sounds a good idea but may be expensive – could the Coastwise practical grants be used for anything like this? Person was asked to follow up with us directly.
- Visitors seemed very knowledgeable about the cliff top erosion processes, landslip and groundwater issues.

Transition planning

- The existing Trimingham community group are keen to press on and get more meetings in the diary for the group and get started on the nature-based and other projects. Keen for good news stories for the village.
- Some sign-ups for transition planning.

Road at risk

- Need to demonstrate progress in work on highways. Team to chase up NCC Highways re. the impact studies and options considerations for the road at Trimingham.

Housing

- Interest in local housing site possibilities, team to pursue this.
- People indicated they are still keen on 'guaranteed purchase' idea, transferable if property is passed on/sold.

Coastal management – existing defences

- Ideas raised about moving the rock that is presently on the beach to support the western end of the revetment.
- Ideas about 'breaks' back towards the cliff behind revetment to limit the water scouring behind the sea wall.
- Coastal engineers to investigate rock reconfiguration options for Trimingham?

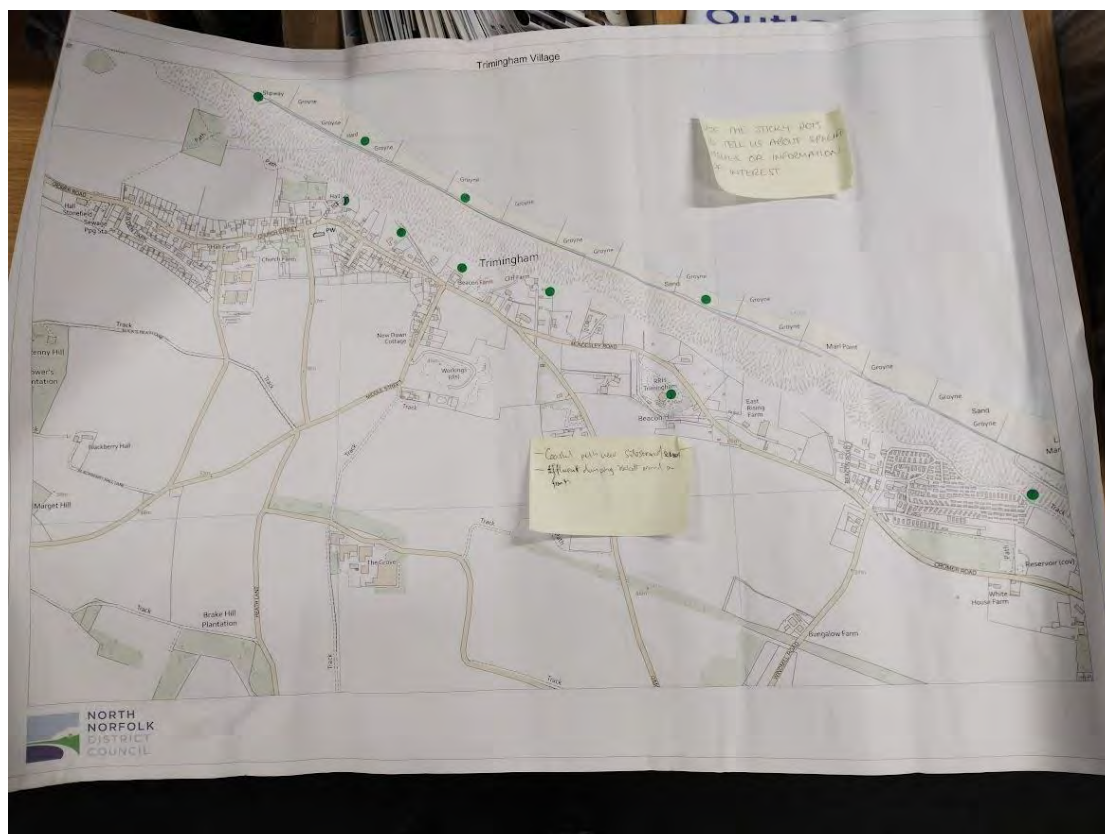
Funding

- Lengthy discussion about funding with the visitor iterating that funding goes to places with more people at risk, which currently it does. Very knowledgeable with good understanding of some of the realities of coastal management.
- Directed some visitors to the funding consultation, explaining how the rules are changing.

Comms and engagement reflections and actions from this café

- Attendance lower than expected but conversations useful as always. Community Group were disappointed with attendance - advert went out in 'Crab Tales' and was posted through every letter box in the village, though approximately 30% of the village is second homes now.
- Most visitors had been to previous cafes. They mainly wanted to know what had happened since the last one.
- The local liaison group were very good at engaging with others on village erosion matters.
- One newcomer did not want to engage with Coastwise staff but did look around and have some conversations with the local group members.
- The local liaison group is particularly keen to see Coastwise move forward with next things including ponds restoration, planning for the road, housing site option raised by local landowner.
- Spoke to a couple who have attended all of our cafés, they were particularly engaged with the 3D cliff model (as others were too). They recognised the section as the frontage close to their home. They were keen to engage others and to chat around the specific issues in that location.

Map capture - Trimingham



Colour	Number	Comment
Green	1	Drainage culvert at Trimingham house caravan park. There is a pipe here which drains water onto the tarmac gangway. Halfway down, the cliff the pipe has broken. Water drains into cliff.
	2	Western end of the revetment now 20m from where originally built. Could a rock pile prevent the wash of sea behind here?
	3	Sea continually breaks over the revetment here reaching the cliff base. The west to east flow washes at the cliff and could rock piles prevent this.
	NOTE	No. 2 & 3 could potentially extend the revetment life by 20+ yrs.
	NOTE	Stickers 4-10 missing (not on map)
	11	Windyridge – this house has historic heritage. Previously called the Ark. Before that used as a zeppelin listening station during WW1. See Trimingham History website for more info.
	12	Impassable now but still an adopted road across to loop road – lots of potholes by the pilgrim shelter (section still used)
	13	Back of barn – only about 20 yards to cliff edge. Huge problem – Beacon Farm.
	14	Old properties demolished. EN12 was used to replace them but in Mundesley – not in the local community which felt wrong.
	15	Are there MOD tunnels and are these affecting the drainage? Or land stability immediately seaward?
	16	Rocks here – probably best not to move these or repurpose. Use ones from Mundesley.
	No no.	Coastal path near Sidestrans School

Happisburgh (two cafés – outputs combined)

Friday 13 June, School hall, 2.30-4.30:

- 24 visitors.
- A very hot day.
- Some children and their carers/parents. Some people of working age. Visiting artist (associate of the Sainsbury Centre for Visual Arts), NHS representative, academic (emeritus). Some residents of Beach Road and other local people.
- Average stay estimated to be 45 minutes.

Saturday 14 June, School hall, 9.30-1.30:

- 16 visitors.
- A very hot day.
- Some tourists as well as local people.
- One work experience student attended to learn and assist.
- Average stay estimated to be one hour.

Comments and discussion points

These points were assembled from written sticky notes contributed by visitors and notes taken by the team on the basis of the discussions they had during both the sessions at Happisburgh (13th and 14th June). They have been grouped and themed according to what arose in conversations on the days:

- Beach access
- Graveyard
- Re-use of at-risk land
- Coastal management and erosion processes
- Funding
- Other
- Comms and engagement reflections and actions from this café

Beach access

- Useful to have the rock and ramp outputs by Jacobs (slides from the slide pack that could be displayed for discussion).

Graveyard

- Has the vicar and Diocese of Norwich received a copy of the Graveyards Report?
- Has the Happisburgh Group and Parish council (for interest) received a copy of the Graveyards Report?
- Concern for the church and graveyard, for people with a strong connection to the area having lived their entire lives there in some cases.

Re-use of at-risk land

- Idea – could the back garden of a property purchased on Beach Road be repurposed as a pocket park / area for wildlife?
- Discussion of ideas for the use of the old caravan park land (acquired by NNDC).

Coastal management and erosion processes

- Ben Fogle New lives in the wild – Isle of Wight episode – use of bark mulch to reduce erosion – find out more about this.
- One conversation focussed on the desire for more rock, but in the absence of this, what we are doing is appreciated.

- Visitors were very interested in the 3D Trimingham cliff model. The Happisburgh group are keen to acquire one for this frontage.
- Investigate costs of lidar scanning and 3D printing for part of the Happisburgh frontage. Possibly to include lighthouse, canyon, beach access, rocks and bell.

Funding

- Keenness to talk about the funding work – one person proposed we just come up with a vision for the coast, cost it out and get that funded. Reflection.
- Can we develop some keylines or better articulate the real limitations with funding in another way? An updated FAQ?

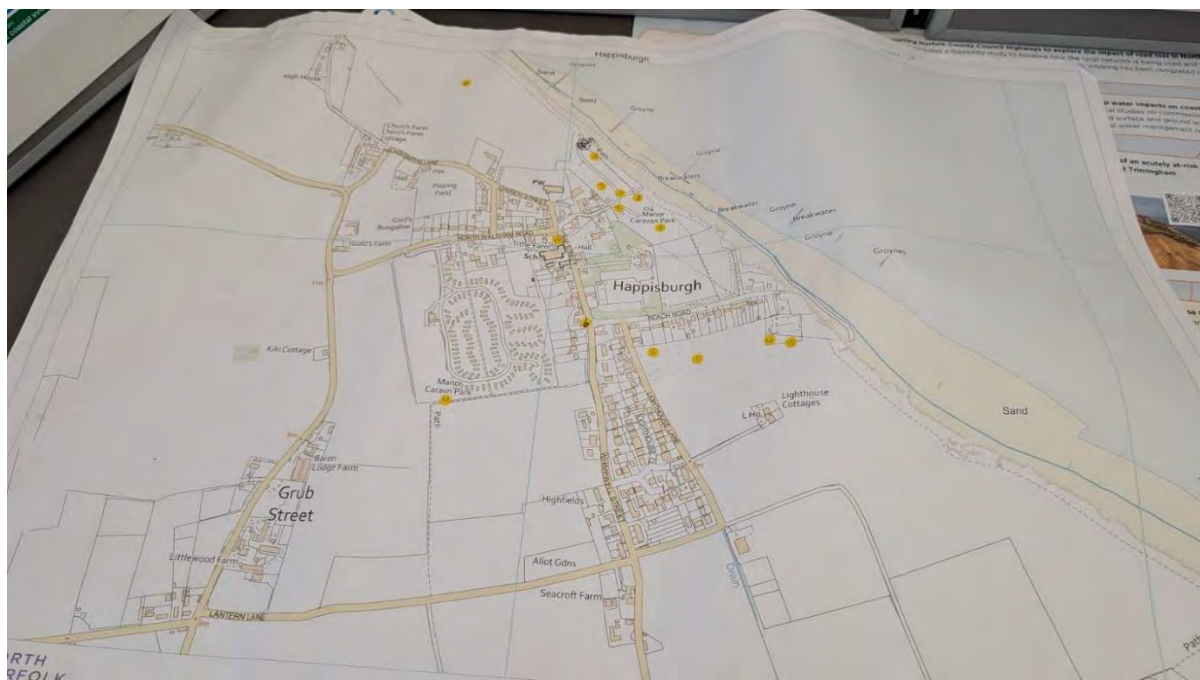
Other

- One elderly visitor very articulately described the repeated loss for some longer-term residents in eroding places, beyond the loss of a home. They described the loss of land and places remembered from their youth, friends' houses, places their children played, the places she and her husband would go as courting teens, etc.
- Village Hall was unsuccessful in accessing Coastwise funds, discussed at the event. Explained that this was because the requests for support in acquiring solar panels and internet are not directly linked with coastal transition. We will continue to signpost to other possible funding where applications do not meet eligibility criteria.

Comms and engagement reflections and actions from this café

- Event posters were pinned to boards in village but were removed.
- School run café worked well to reach a different audience, even if a relatively small number (school roll is small – only 52 pupils and many don't live in Happisburgh).
- Some parents were not aware of the event happening at school, in spite of electronic communication about the event.
- The Happisburgh group attended in shifts, enabling some good conversations about ideas for onward work.
- We had some positive feedback from visitors about the event verbally given and some praise around how much we have been doing for such a small team. More than one person said they were impressed with the quality and feel of the event and people liked the coastal erosion literacy resources.
- Lots of points captured on the map – a useful point for discussion.
- Interactive coastal erosion literacy activities were enjoyed by visitors (Cliff model and Cliff Jenga)
- Ice lollies are a good refreshment addition in hot weather at venues where there is a freezer – very popular with children and adults alike.
- Children's activities (colouring, puzzles, fossils, Duplo, etc.) were appropriate and well used on both days, but particularly at the after-school event.
- Pursue idea to install local notice boards for our use and to hand on to Parish Councils at project end (previously there has been a request in Happisburgh for a notice board. In process of actioning this – ensure this is followed up).
- Ensure more posters are up around the village on the day – including at other venues which are typically used, to re-direct people if they go there.
- Improve event signage at unfamiliar venues
- Have more presence outside future events to chat to passers-by and attract more visitors to come inside
- Use A frame as standard outside each event
- Strategic placement of flag
- If the school is used again, use extra arrows and directional signs to entrance, and consider putting instructions for where to go onto the event flyer (the site is unfamiliar to many local people who are not used to accessing the hall)
- Continue to use the coastal erosion literacy products.

Map capture - Happisburgh



Colour	Number	Comment
Yellow	1	Sat-navs take people with their caravans and then struggle to reverse. OS Map 13 wrong
	2	Fly tipping by bollards – garden waste. So 'no fly-tipping'
	3	Tidy up site + add a few benches
	4	Could the toilets when they are replaced be made into a seat/shelter area – information etc on walls (art)
	5	Rather than planting/seeding wildflowers let nature take it's course. Its shown already it works and things grow that want to grow
	6	Work with Sainsburys centre + local group to commission a climate change/coastal change – local people to help shape this
	7	Could we commission someone to make a film of a walk looking at CC on the coast – build on Caitlyn's work
	8	Pipe sticks up – needs removing – issue with people sight impaired
	9	Issue on the junction with parked cars, can highways restrict this. Question to County Councillor and Lucy Shires
	10	National Trails can they consider the closeness of the cliff to the path
	11	Refresh/renew Happisburgh info panel -part of the transition plan!
	12	Info panels - update + use
	13	Pulse of the earth video – online – use for church VR project?
	14	Link QR code – oral history / archive material / Happisburgh but also others?

Phase four team reflections, learning and actions

This section summarises some cross-cutting points that the team captured in a 'hot de-brief' session held after the full phase of cafés were complete.

Summary

- Communities are keen to see (more) practical progress and action
- Much interest in the NCERM risk data and mapping, but this can be hard to explain
- Funding (or lack of) is always a talking point
- People's circumstances are different and strongly influence how erosion risk impacts them
- Keep the café format in review and adapt as needed

Communities are keen to see (more) practical progress and action

- Many wanted to know specifically what we had been delivering since the last phase of cafés, with a particular interest in practical actions.
- There was plenty of information to share, but a lot of it is by nature very technical. The updates map was really useful to facilitate discussion, especially as it shows background and national as well as place-specific activities.
- Some people commented that Coastwise had a lot to show this time, whilst others commented that there wasn't much different to last time; they were expecting more.
- Going forward, ensure that we focus more on practical actions especially in the marketing of the events.

Much interest in the NCERM risk data and mapping, but this can be hard to explain

- Lots of discussions about the NCERM data and risk lines.
- We were nervous about presenting the new risk mapping, but people were interested. The majority of people who viewed it did not know about it.
- We pointed visitors in the direction of the SMP Explorer and NCERM data.
- Many conversations about climate change. Found the need frequently to explain the UK Climate Projections 2018 percentiles and what the maps and our visual overlays show. Some of the team found it difficult to confidently explain these.
- Anecdotally, people are still looking at the SMP document for information and making decisions on it.
- Continue to have the risk mapping available at future cafés.
- Develop some key lines and written interpretive explanations about what the mapping shows.
- Add the cliff top lines to the laminated risk overlays for each site.
- The existing SMP document still shows the older erosion risk maps, and does not divert to the SMP explorer with updated policy/information. SMP doc is still current, but maybe needs some info added in the policy section to direct to SMP Explorer and NCERM for further information, and on the maps state 'superseded' and direct to NCERM.
- Share this feedback with the EA coastal resilience team.

Funding (or lack of) is always a talking point

- Some discussions around funding (partly in relation to the poster we shared about the Defra consultation).
- People are clear that funding tends to go to places with more people at risk but there is still injustice felt about this.

- Limitations in the way funding works highlight the absence of a holistic approach or vision for the coast.
- Lack of funding for defences presents an opportunity to discuss transition as a concept and encourage involvement in the transition planning work.

People's circumstances are different and strongly influence how erosion risk impacts them

- Conversations revealed that for long-term residents, there can be an impact of cumulative or repeated losses for people through their lives, e.g. childhood home, significant meeting places, children's play places, favourite walks and particular landmarks.
- Discussion around some people's background trauma in their lives, that this can have a big influence on how able / willing they are to handle discussions around transition, especially if it relates to their homes.

Keep the café format in review and adapt as needed

- On this occasion, the timing did not quite match up with the onboarding of the transition planning projects, which had been the original intention (due to delays in contracting).
- Awareness that there may be local fatigue with the format.
- Having posters and slide packs as booklets to summarise some of our sub-projects was really useful.
- Continue with an array of efforts to publicise any future events that we do including a lot of local publicity on the day.
- Make more use of Parish Council members' willingness to display and distribute hard copies of posters and leaflets.
- Review approach, timing and marketing to hook people's interest for next time, e.g. focus on specific topics, link with transition planning projects, etc.
- Consider creating a full set of one-page infographics and printing slide packs as booklets for each of our key pieces of work (full reports can be off-putting). Infographics/summary posters can also be collated into a booklet. Develop keylines for these pieces of work too to assist the whole team in their discussions.
- Continue having a local map for reference and as a discussion point and prompt at future events. The 3D cliff model also a very good talking point and literacy building opportunity – consider creating these for other sites.
- Continue to give local Councillors and local liaison groups good advance notice of the café arrangements and invite them to attend/co-deliver as appropriate.

Event evaluation

Event evaluation forms and a post box were available on the information / welcome table. At previous cafés, a staff member had been allocated to approach people on departure to kindly request that they fill in an evaluation form. In phase 4, we streamlined the staffing for workload efficiency. Although we tried to ask people to fill the forms in, only three were received.

The questions and average scores are as follows (1 = Not at all, 5 = Very):

- | | |
|-----------------------------------------------------------------------------|------------|
| 1. Overall, how useful did you find this Coastwise café? | 4 |
| 2. How interesting and relevant were the activities and information to you? | 4.3 |
| 3. How likely would you be to attend future Coastwise events? | 4 |
| • Free text box for feedback | No entries |

Summary and next steps

Once again, this phase of Coastwise cafés provided a good opportunity for local interaction and discussion.

Overall, the attendance was somewhat disappointing relative to past events and the effort made to market these sessions. This may be due to summer holidays away, the heat at the time of some of the events, engagement fatigue with the format or other reasons.

The use of the school hall at Happisburgh and an after-school event meant that we did attract a much younger demographic than has previously been achieved.

The interactive content and coastal erosion literacy products that we have created to date were well received at all cafés, as was the reproduction of the Coastwise creative exhibition.

Key learning:

- Communities are keen to see (more) practical progress and action
- Much interest in the NCERM risk data and mapping, but this can be hard to explain
- Funding (or lack of) is always a talking point
- People's circumstances are different and strongly influence how erosion risk impacts them
- There is a need to adapt the café format and frequency as needed

The Coastwise café format and approach will be adapted going forward to meet a perceived desire for more demonstration of practical progress as this unfolds. Certainly, for the next phase, we will seek to link effectively with the local transition planning initiatives that are underway so may not take the same format for Phase 5 in autumn 2025 as has been used to date.

Event photographs

