

Mundesley Coastal Management Scheme

Public Drop in Event 4 October 2017 – Summary Report

Objective

- Introduce and raise understanding and awareness of the Mundesley Coastal Management Scheme
- Present the proposed option
- Seek feedback and community contributions

Date/Location

- 4 October 2017 – Coronation Hall – 2pm – 7pm

Publicity

Posters and flyers advertising the events were located at key locations such as shops, cafes and in key locations on the seafront.

Parish Councillors were presented the Proposals at the July Parish meeting, the Parish then made a decision regarding funding towards the scheme on 25 September.

Please see Appendix 1 for example of flyer/poster advertising the event.

Session materials

The following materials were provided at the events.

- Boards providing information about the scheme and the proposal
- Booklet containing information about scheme and proposal
- NNDC Coastal Management Information Leaflets
- Feedback board
- Contact card

Please refer to Appendix 1 for examples

Number of attendees

Over the session 54 people were recorded as attending.

Feedback board responses

Boards were provided as part of the display to seek feedback towards the event and the Feedback received from Mundesley Public Drop in Session.

Question	Yes	No	Don't know
Did you find the information informative and easy to understand?	28	0	1
Did you find the staff helpful and were they easy to understand	28	0	1
Do you agree that:			
The Mundesley Coast Management Scheme is progressing and will seek to maintain coast defences	28	0	1
I support the scheme for Mundesley	29	0	0
The Coastal Management Scheme is still dependent on identifying all the funds needed.	24	0	0
Further Comments:			
<ul style="list-style-type: none">Thanks for coming today providing an excellent overview and material to take away.			
Response: Thank you			
<ul style="list-style-type: none">More escape steps in the revetments between Brick Kiln Steps and Cardiac Hill Steps (behind Trafalgar hotel).			
Response: We can check the number of steps over the revetments in this location, we normally seek to provide one set between each groyne.			
<ul style="list-style-type: none">I support the scheme, however it seems to be a bit half-hearted because as usual cash seems to be the hindrance in doing a proper job. Government can always find £billion for weapons of war and wasteful foreign aid how about spending more in the UK on important work such as this. Also much of the erosion is from groundwater/rainwater. Farmers need to be encouraged or made to dig ditches and ponds to eliminate such as problems, just patching up cliff falls with a few rocks will not work.			
Response: The scheme has to work within the governments coastal management funding mechanism, North Norfolk District Council does not have control of this funding regime but seeks to make the most of it as far as possible. Coastal erosion is also influenced by groundwater in the cliffs, however, national funding does not allow for schemes to manage groundwater, only coastal erosion by the action of the sea. North Norfolk District Council			

has limited influence on encouraging actions of landowners to bring forward initiatives to manage groundwater. Where it is possible we do seek to use the planning system to encourage sustainable drainage systems for new developments to minimise the impact on the coast. Please note the above comment is the opinion of a private individual and does not represent the view of the Council.

- Supportive of the scheme but could it be seen as an opportunity to improve the promenade with more imaginative schemes? One small point – better signage for dog free areas and dog permitted, and infill for metal steps to improve access.

Response: It would be nice if this could be achieved. The scheme proposal seeks to make some improvements to the promenade, however, the main funding source does not unfortunately allow for wider activities (unless other sources can be identified). If any suggestions are presented they can be considered further by the relevant teams within the Council and integrated into the proposal where possible. We do install boards on the metal steps to aid dogs etc. If any of these boards are missing we should identify this in our inspections or we can respond to reports from the public. We will pass on the request for better dog signage to the relevant team at NNDC.

- I support the scheme but would like to see the final area promenade/steps/signage etc. as more welcoming/creative as in Cromer. Not just functional.

Response: We are looking to make some improvements to the promenade and add some additional steps. Please see the response above.

- I understand Anglian Water will contribute but would like it to be public what % contribution is made given 1) They are a privatised and have shareholders, investment matters. 2) Their need of use of the area is significant.

Response: An application has been made to Anglian Water for £200,000 and we await a response from Anglian Water.

Conclusion

Overall the Mundesley Coastal Management Scheme Proposal was well received by the public at this event.

It was felt by the delivery team that the objectives were met and the proposal was overall supported by those who attended.

The format of the event appears to have worked well and materials were well understood and received.

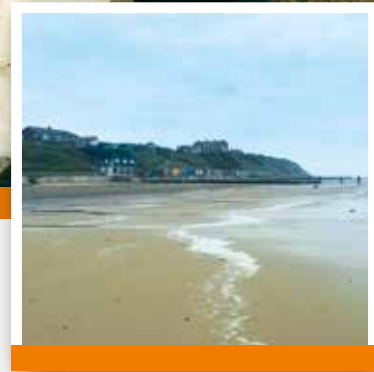
Moving forwards there could be further information regarding:

- Progress
- When the scheme will be constructed

Appendix 1 – Public Drop in Information

Mundesley

Coastal Management Scheme Proposal



Contents

Mundesley Coastal Management Scheme	3
Update on progress	4
Existing & proposed defences	5
Example drawings of proposed defences	6
Cost & funding	10
Contact details	12

Update on progress

Earlier in the year, a shortlist of possible coastal management approaches and options was presented to the village. This information is available at www.north-norfolk.gov.uk. Since the event, these options have been explored further alongside any comments received.

As expected, it is clear that any single type of defence will not work across the whole frontage. There is already a mix of defence types at Mundesley and this will continue to be the case in the future.

There are many ways different defence types could be deployed. The shortlisted selection of possible defence types and scenarios was assessed with consideration to the following:

- ▶ **Technical assessment, including public safety (Will it work?)**
- ▶ **Environmental consideration (Is it acceptable?)**
- ▶ **Financial viability (Can we afford it?)**

This process used engineering judgment and knowledge of the coast to help identify a preferred set of defence options, which was then further refined. This refined proposal is what is presented today, although some of the detail will need to be developed further if it is progressed.

Existing defences

Section A

- ▶ Timber Revetments
- ▶ Timber Groynes

Section B

- ▶ Concrete Block Revetments
- ▶ Timber Groynes

Section C

- ▶ Seawall
- ▶ Timber Groynes
- ▶ Rock Armour



PROPOSAL

Section A

Stockpile rock armour to infill, protect and, over time, replace the timber revetment.

- Rock is robust with a long residual life
- Rock could be positioned in front of, behind or to infill the timber revetment
- Rock can be moved to where it is needed
- Rock has low maintenance costs

Section B

Additional rock to support concrete block revetment structure

- The concrete blocks have worked well over the years
- Rock placed in front of and potentially behind the existing structure will support and enhance it for the future
- As the metal frame fails, this can be removed where required

Section C

Refurbish sea wall aprons (part of foundations) and sea-wall facings where necessary.

- Will bring all the sea walls up to a good condition

Refurbishment of the sea-wall deck (promenade) between the Beach Café and the Ship Inn.

- Will bring all the sea walls up to a good condition and reduce damage during storm events
- Provides an opportunity to improve pedestrian access

Install scour protection above the sea wall between the Manor Hotel and the Beach Café.

- Will limit the likelihood of loss of the cliff toe behind the sea wall, as has been previously experienced.

Placement of rock armour at the base of the sea wall in front of the Anglian Water infrastructure.

- The rock will provide additional protection to the infrastructure where beach levels are historically low

Potential enhancement opportunities include improving pedestrian and vehicular access to the beach.

- The pedestrian access from the sea wall to the beach at the old lifeboat slipway can be difficult, particularly when beach levels are low; installing new metal beach steps would ensure a good level of access is maintained
- Widening some of the access ramps, such as that from the sea wall to the beach below the Manor Hotel, would improve access for both maintenance vehicles and emergency services

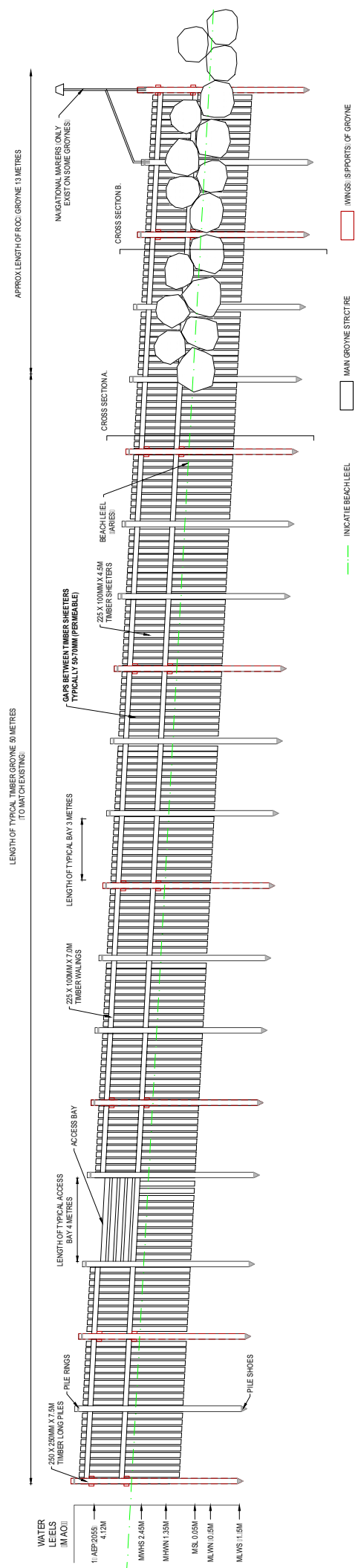
Sections A B C

Refurbish each of the timber groynes (allowing for 30% new timbers) and add rock protection to the seaward end.

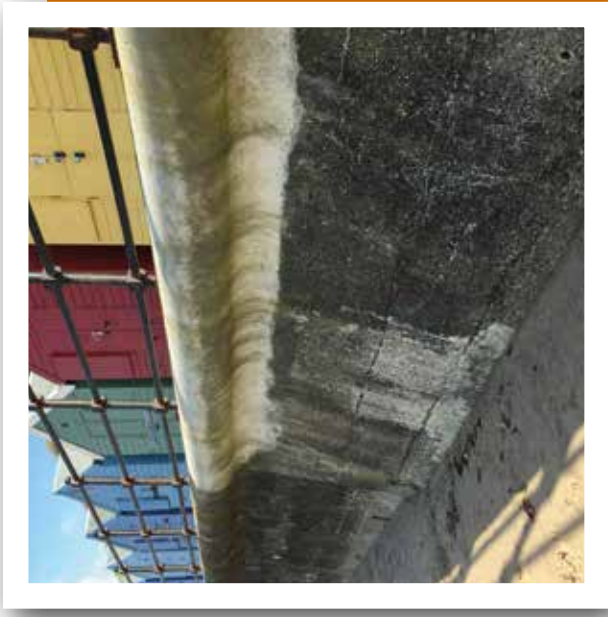
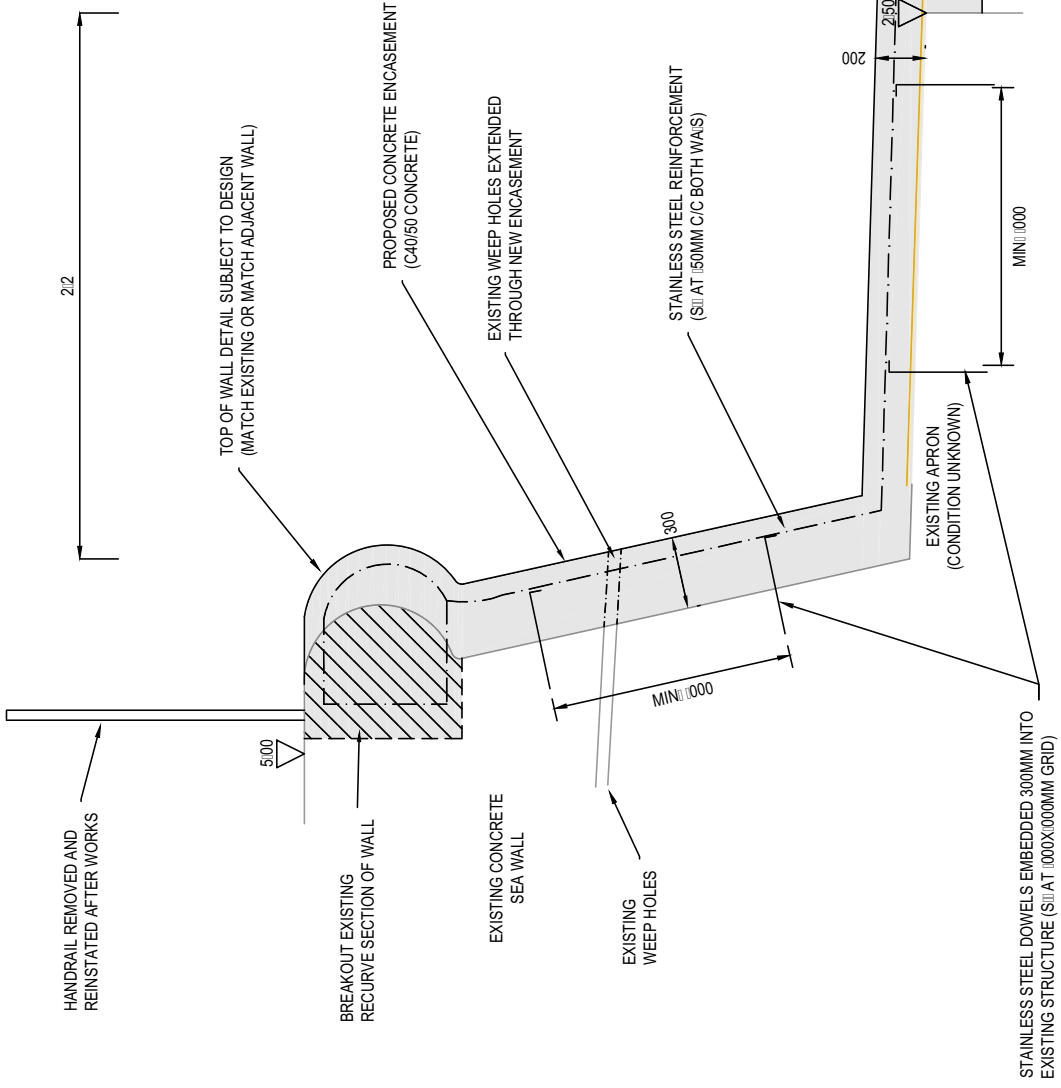
- The groynes have worked well and are environmentally accepted
- Their continued maintenance will help to limit the loss of beach material and maintain levels
- The seaward ends are exposed to the most wear and tear from the sea, rock will help to make them last longer

The following pages show example drawings of proposed defences

Hybrid Groyne



Seawall & Apron Encasement

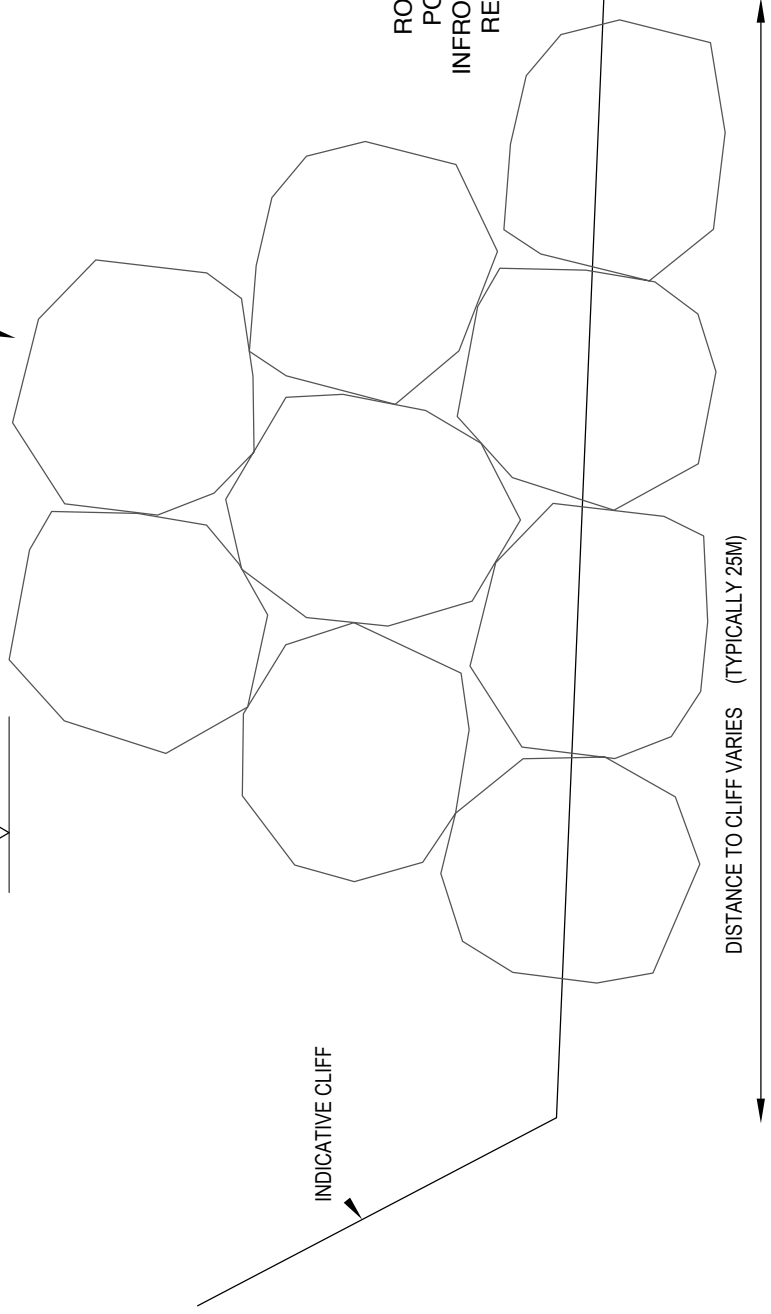


Rock Protection Behind Timber Revetments



PROPOSED ROCK PROTECTION 1000-3000KG
INDICATIVE ARRANGEMENT AND SIZING SHOWN

5.40 mAOD



4.95 mAOD

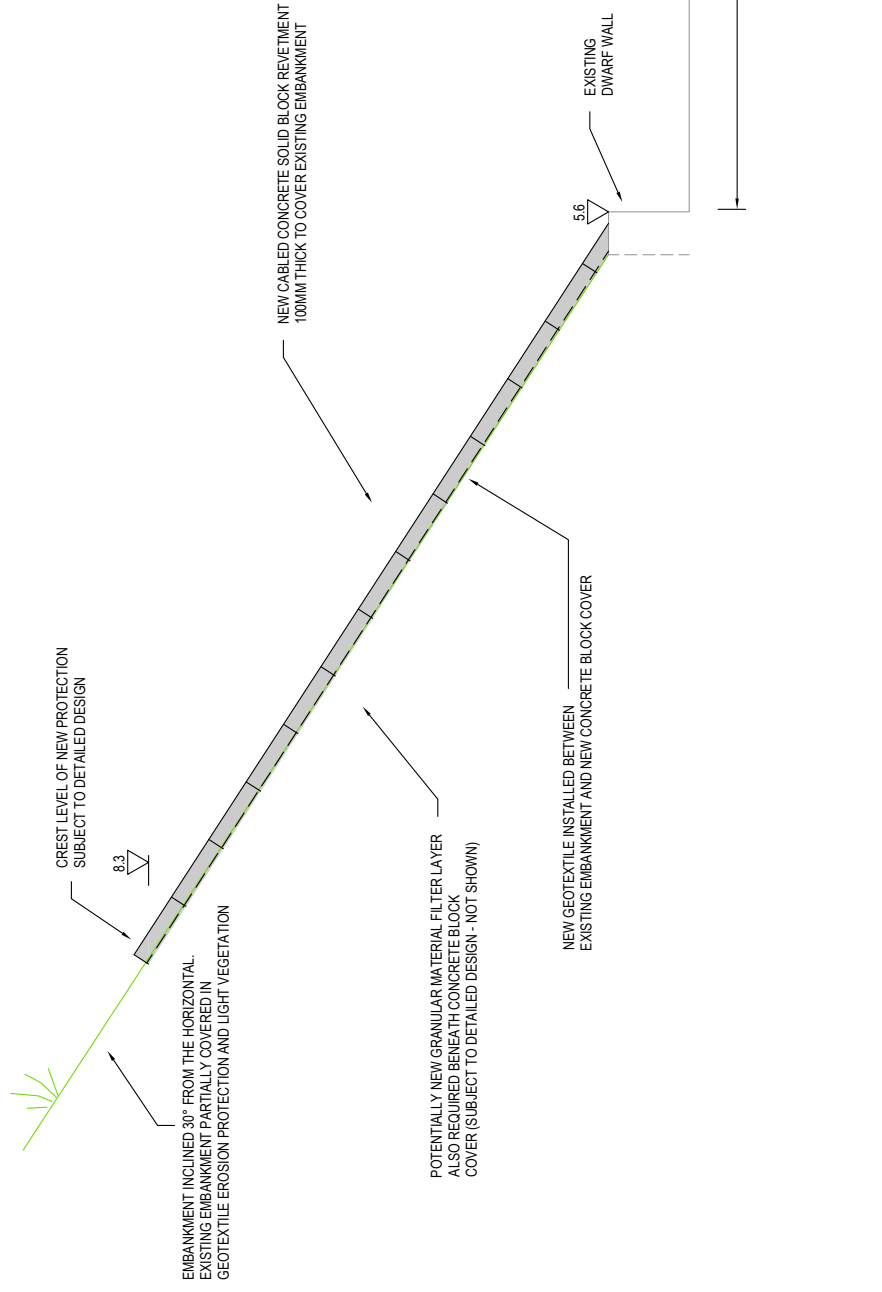
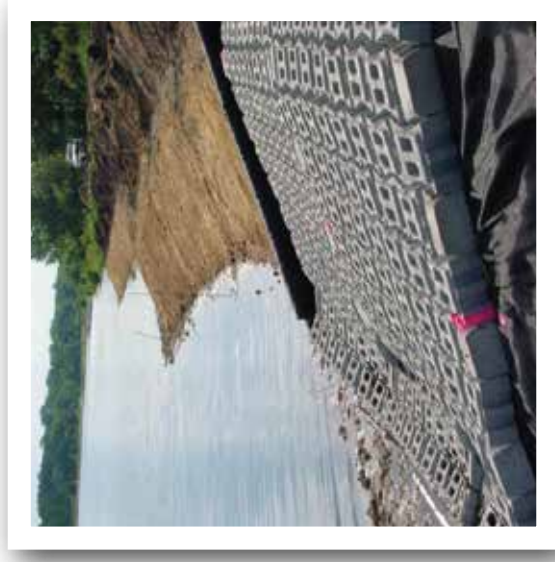
EXISTING TIMBER REVETMENT

ROCK CAN BE POSITIONED IN FRONT OR BEHIND REVETMENTS

BEACH LEVEL (VARIES)

2.40 mAOD

Concrete Block Embankment Scour Protection



Cost and funding

It is estimated that the cost of the proposed works will be £3 million. It is estimated that the scheme could qualify for just over £2.25 of government funding from DEFRA, via the Environment Agency if other contributions can be identified.

North Norfolk District Council has already confirmed a contribution of over £300,000 towards the scheme. Mundesley Parish Council has confirmed a contribution, subject to conditions, of approximately £20,000. Further funds are being sought from Anglian Water.

Alternatively if the required level of contributions cannot be found, the scope of the scheme could be reduced, although this is not the favoured approach.

Contributions from the local community, visitors and businesses are important not only in seeking funds for the scheme but also in showing local support, which will help with the application for DEFRA funding. The Council is keen

to identify a local community group who could lead or assist North Norfolk District Council with championing local fund raising, this could be through a 'Just Giving' webpage.

In-kind contributions would be welcome. These could be supporting any planning application, sending letters of support or providing free use of private beach access points.

What happens next?

Following this event, any comments will be considered and reported to the Scheme Local Liaison Group. If there is sufficient support and the funding is identified, an Outline Business Case will be finalised and submitted to the Environment Agency in order to seek approval for government funds.

If this is successful, we can progress to complete the detailed designs, seek the necessary consents and permissions and begin to select a contractor to complete the works.



Contact details



01263 516248



coastal.management@north-norfolk.gov.uk



www.north-norfolk.gov.uk www.coasteast.org

Credits

AECOM for indicative drawings

AECOM Scour protection photograph

NNDC All other photographs

Environment Agency aerial photograph