



PRETTY CORNER WOODS ANNUAL REVIEW

2022

Contents

Introduction - Welcome to Pretty Corner Woods	2
Abstract	2
About	2
North Norfolk District Council's Corporate Objectives	2
Countryside Service Vision and Aims	3
Working with the Woodland Trust	4
Green Flag Award	4
NNDC Leisure and Locality Services Structure 2022.....	5
Health Safety and Security.....	6
Quality Facilities and Activities	6
Safe Equipment and Facilities.....	8
Personal Security.....	8
Maintenance of Equipment, Buildings and Landscapes	9
Litter, Cleanliness, Waste Management and Vandalism	9
Horticultural Maintenance	10
Arboricultural Maintenance.....	11
Building and Infrastructure Maintenance	13
Equipment Maintenance	13
Environmental Management	14
Managing Environmental Impact	14
Waste Minimisation	15
Chemical Use	15
Peat Use	15
Climate Change Adaption Strategies	15
Biodiversity, Landscape and Heritage	18
Management of Natural Features, Wild Fauna and Flora.....	18
Conservation of Landscape Features	19
Conservation of Buildings and Structures.....	20
Community Involvement.....	20
Community Involvement in Management and Development	20
Appropriate Provision for Community.....	21
Marketing and Communication	24
Marketing and Promotion	24
Appropriate Educational and Interpretational Information	27
Action Plan	28
Conservation and Woodland Management Work Plan.....	0

Introduction - Welcome to Pretty Corner Woods

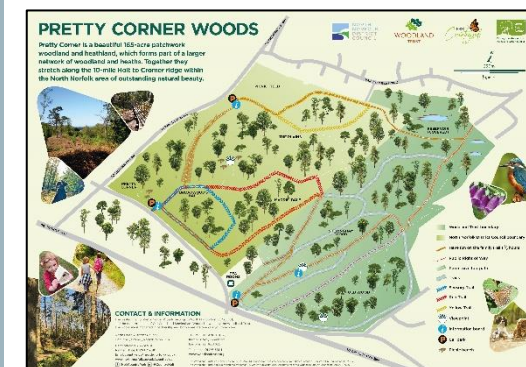
Abstract

This annual review outlines the management work, activities, projects, development and general progress made by North Norfolk District Council's Countryside Service against Pretty Corner Woods Management Plan in 2022, and forms the basis of the authority's application for continued Green Flag Award status. The annual review is separated into two sections for the ease of the reader - generic & previously provided information is shown within a blue background, with information & updates relating to the previous year specifically shown within a green background.

About

Pretty Corner Woods, which has held Green Flag Status since 2013/14, forms part of a larger woodland complex under differing ownerships. Pretty Corner Woods (30.3Ha) is owned by North Norfolk District Council (NNDC), and The Woodland Trust (WT) own and manage 19.44Ha of woodland to the south east known as Old Wood. A further 11.37Ha of woodland to the north east, sold to Sheringham Town Council by Anglian Water in 2006, is leased to the WT and is included within their management operations. The site contains a patchwork of habitats including mature secondary woodland, conifer plantations, regenerating heathland, acid grassland and a small amount of ancient woodland.

The wood is situated within the North Norfolk AONB, along the Holt- Cromer ridge. The site neighbours Norfolk Valley Fens SAC and is a short walk from Sheringham Hall Park and gardens. The historic town of Sheringham is 2 miles away. A popular Edwardian seaside resort, the town still has a thriving tourist industry and attracts visitors to both the sea front and the surrounding countryside.



Notable and significant features of the site include:

- 2 free car parks - one off Holway Road and one off Pretty Corner Lane,
- A large picnic/playing field,
- A boardwalk linking the two car parks,
- A viewing point,
- Waymarked routes.

North Norfolk District Council's Corporate Objectives

North Norfolk District Council's Corporate Plan 2019 - 23 sets out the Council's priorities until 2023. It guides business decisions to ensure that the council is well-run and able to meet its objectives.

The Corporate Plan is a strategic document, listing the priorities for council actions for the period 2019 to 2023, giving the shared vision and values and listing the priority areas on which the council intends to concentrate its efforts:

- Local Homes for Local Need
- Boosting Business Sustainability and Growth
- Customer Focus
- **Climate, Coast and the Environment**
- Financial Sustainability and Growth
- **Quality of Life**

NNDC's countryside team is well placed to support the Councils' corporate objectives highlighted above - *Climate, Coast and the Environment*, and *Quality of Life*. A copy of the corporate plan can be found here: [Home | Corporate Plan 2019 to 2023 \(north-norfolk.gov.uk\)](https://www.norfolk.gov.uk/corporate-plan)

Countryside Service Vision and Aims

North Norfolk District Council's Countryside Service manage areas of woodland and open space amenity land for the safe enjoyment of the community of North Norfolk, protecting & promoting the countryside and it's wildlife, flora and fauna, whilst encouraging sustainable access. The main objectives of the service can be defined as:

- *To provide a high quality and inspiring visitor experience and a rich biodiversity of wildlife in sustainable woodland settings and open spaces*
- *To enhance the wildlife within our sites by diversifying habitats whilst securing the future of important species and complementing adjacent conservation sites*
- *To promote regular visits to our parks through increased awareness, and by providing a variety of high quality facilities, events and activities*
- *To actively encourage community involvement in our parks and open spaces at all times*
- *To seek service sustainability through appropriate income generating schemes and activities, and the provision of a first class service which meets the needs of the community*
- *To support the Councils corporate objectives relating to Climate, Coast and the Environment and Quality of Life*

Working with the Woodland Trust

NNDC and The Woodland Trust work together in partnership to manage Pretty Corner Woods as a whole. Both are committed to long term partnership working to secure good quality access to the woodland. This commitment to a partnership approach has been strong over a number of years. Unfortunately in recent years the Woodland Trust has seen a number of members of staff associated with this partnership move on from the organisation. This, coupled with the pandemic, has significantly slowed the progress of any partnership projects and site developments. As a result of this NNDC's countryside team have made the decision to push on with site improvements in Pretty Corner Woods to ensure that the site continues to develop and improve in the short term, with the long term aim to return to larger scale whole site improvements in the future.



Although approaches to practical management works differs at times between organisations the overall aims of both parties remain consistent, and a long term strong working relationship exists. Both organisations seek to manage the site for the common goals of promoting safe public access, enhancing wildlife and diversifying habitats and working positively with partners. NNDC rangers look after the site at a local level, being wholly responsible for Pretty Corner and carrying out informal site checks in Old Wood, reporting issues back to the Woodland Trust. NNDC rangers carry out agreed management works and repairs within Old Wood with the agreement of the WT.

Green Flag Award

The purpose and aims of the Green Flag award are:

- To ensure that everybody has access to quality green and other open spaces, irrespective of where they live
- To ensure that these spaces are appropriately managed and meet the needs of the communities that they serve
- To establish standards of good management, and to promote and share best practice amongst the green space sector
- To recognise and reward the hard work of managers, staff and volunteers



Pretty Corner Woods achieved its first Green Flag in 2013/14 and has now held the prestigious award for 7 consecutive years. This is an achievement which all those who have been involved in managing the site are very proud of, particularly given the requirement for continuous improvement and development.

Staff Resource

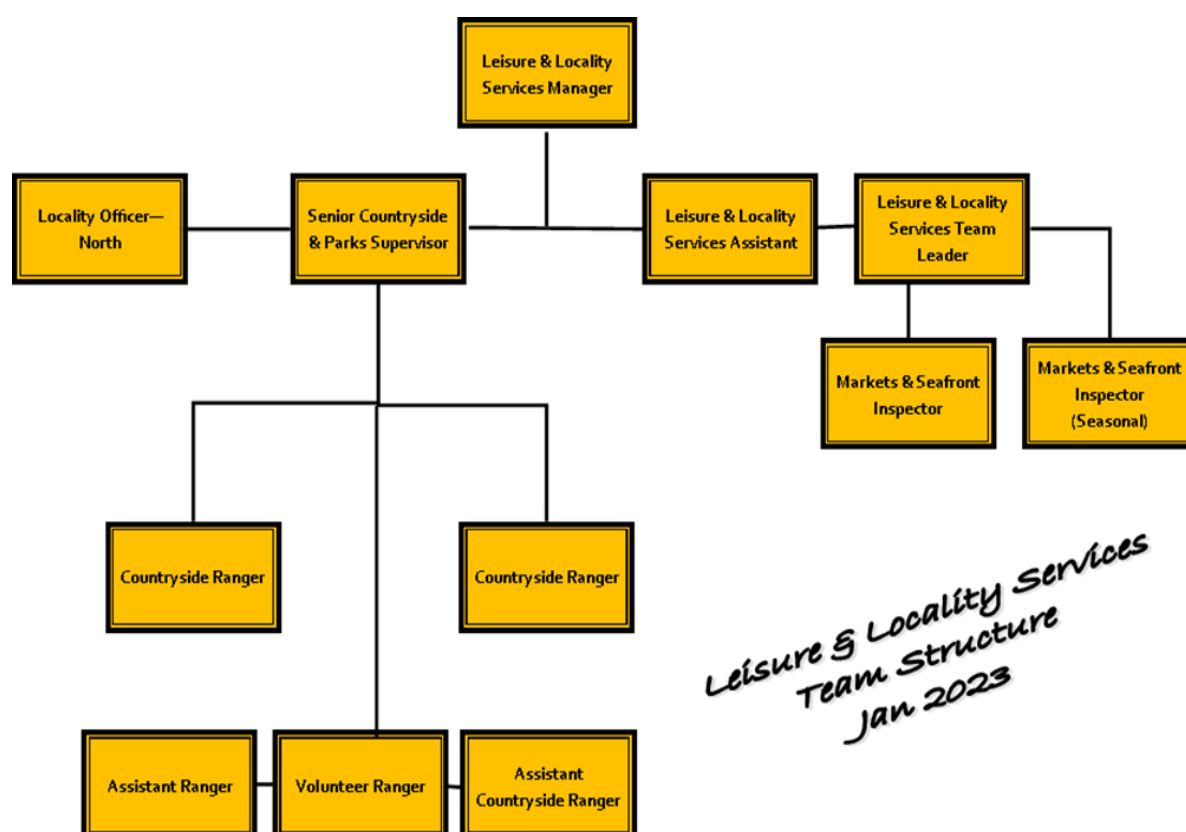
NNDC's Countryside Team manage 15 sites across North Norfolk and staffing levels for this are stable and adequate to deliver the service to a good standard. The team sits within the wider Leisure and Localities Service at NNDC which manages a wide range of services for the authority, including a Pier Pavilion Theatre, foreshores, sports and leisure centres, sports development, beaches, beach huts and markets.

Pretty Corner Woods is an extremely important and loved site for the Countryside Team, with the following staff resources attributed to its management:

Position	Resource Attributed to PCW (FTE)
Senior Countryside Supervisor	0.2
Countryside Ranger	0.2
Countryside Ranger	0.2
Assistant Ranger	0.2
Assistant Countryside Ranger*	0.2
Leisure & Locality Services Manager	0.1
Leisure & Locality Services Team Leader	0.1
Volunteer Ranger	0.1

*in 2021 we were able to utilise hours previously assigned to a seasonal visitor centre assistant post at Holt Country Park to introduce a new part time Assistant Countryside Ranger. This has proven to be of great benefit to the service, enabling the team to work in different ways to help improve the output achieved.

NNDC Leisure and Locality Services Structure 2022



Health Safety and Security

Quality Facilities and Activities

Pretty Corner Woods offers visitors a number of different facilities, activities, events and options which encourage them to stay active and healthy, as well as to continue to visit the park regularly.

Facilities

- *Car Parks* - Pretty Corner Woods benefits from two free car parks for visitors to use, a smaller car park off Holway Road heading towards Sheringham town and a larger car park situated on Pretty Corner lane. The condition of the car parks is monitored by the ranger team with repairs taking place as and when necessary. These repairs are carried out by the ranger team themselves or the Council's property services team if required. Both car parks had emergency gates installed in 2021 to allow the rangers to close these off when circumstances dictate it necessary.



- *Picnic/Playing Field* - A large picnic field is situated to the north of the site which can be used by visitors to enjoy their lunch or to play games. This area is maintained as part of the Council's grounds maintenance contract.

- *Waymarked Routes and Sculptures* - three new colour coded waymarked trails were installed on site in 2020, with a further trail added in 2022 and the route plotted for a fifth in 2023. The site also plays home to some sculptures, including the much loved owl sculpture which can be found at the start of the blue/red trails. The plan for the future is to introduce a feature trail to replace the recently removed sculpture trail.



- *Tea Rooms* - The tea rooms provide a convenient and pleasant place for refreshments. They are situated on Pretty Corner Lane surrounded by the woods. The tea rooms are independently managed and were sold to new owners early in 2021. We have introduced ourselves to the new owners and understand that their plan is to re-open as a café, and possibly a new forest school, however at the time of writing this has still yet to be fully confirmed. We would like to work with the new owners and as such have avoided introducing concessions to this site.
- *Picnic Tables and Benches* - Some picnic tables and benches are situated around the site for people to stop and enjoy their lunch, a brief pause in their walk or a rest of their legs. In 2021 we also introduced new 'Happy to Chat' benches to help combat social isolation. We have increased the number of benches available

around the site following the feedback received as part of our most recent user survey.



Activities and Events

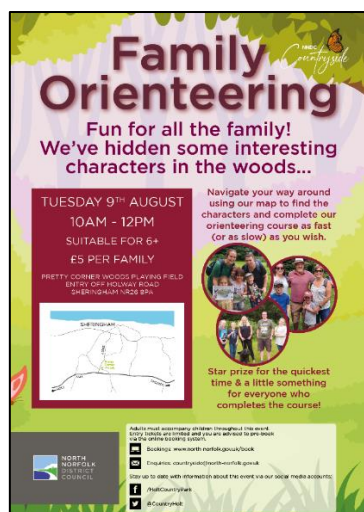
Events

Each year our team organise and deliver outdoor events for the local community and visitors to the district to enjoy. These events are provided for a number of reasons, including promoting regular use and general awareness of our parks and open spaces, providing countryside education to the community, and helping to make the service sustainable into the future. They are a very valuable and enjoyable part of the work we do and we have been working hard in recent years to develop and diversify our offer to ensure that as many people as possible can access events which they enjoy.

Pretty Corner Woods as a site is well placed to deliver events thanks to its large field which can be used for car parking and an event at the same time. The lack of facilities does lead to greater costs when organising events at this site, which has previously led to less events taking place here than at Holt Country Park. However, in 2021 we experimented with providing more events at this site during the summer holidays with the results proving very pleasing. In 2022 we continued with this approach and brought summer events to PCW, please see table below for details.

Holt Country Park Events 2021				
Event	Date	Provider	Children	Adults
Mini Monsters	Aug 2 nd	Mini Monsters	46	29
Family Orienteering	Aug 9 th	NNDC	25	22
Toddler Trail	Aug 23 rd	NNDC	7	7

These events are important for Pretty Corner as they introduce more people to the site and make events more accessible for those living close by. We would have liked to have provided more events in 2022 but unfortunately we were hampered by capacity issues in the wider service. It is hoped that we will significantly increase the number of events we provide at this site in 2023, catering for a mixture of audiences.



Activities

In addition to the events held at Pretty Corner Woods visitors are able to download a copy of the Pretty Corner Explorer booklet, designed to help keep children and adults entertained on their visit. The team are also looking at ways in which they can utilise the activity sheets produced for Holt Country Park for use at Pretty Corner, this is likely to be via a downloadable copy available on the webpage. The Explorer booklet can be found here - https://www.norfolk.gov.uk/media/2112/prettycorner_explorer_booklet_with_map.pdf

Safe Equipment and Facilities

The site and other features are formally inspected by rangers monthly and an itemised inspection schedule is completed, with additional (more informal) inspections carried out as part of their regular visits to site. Paths, artwork, bins, benches, structures, interpretation, trails etc. are covered within these inspections. Maintenance works are undertaken by the rangers who follow a monthly work plan based on the management plan and the inspections. All significant activities and operations are covered by risk assessments which are reviewed on an annual basis.

Personal Security

Although anti-social behaviour is not completely absent from Pretty Corner Woods it is extremely rare that there are occurrences whereby individuals are personally affected by it. Emergency signs are in place on site in the car park areas, which cover the information required by visitors in case of emergency, including contact numbers for the ranger team and the main council offices. Rangers are fully first aid trained with forestry add-on and carry radios which operate off a multi-network sim system allowing for a much greater coverage than an ordinary mobile phone. All of the team are also have an enhanced DBS check in place which is renewed annually, and the team all have standard issue uniform making them instantly recognisable to the public when on site.

The ranger's safety is supported by the use of the Council's chosen lone working system - skyguard, and their movements can also be tracked via the radio's they use.

A working relationship has been established with the local police Safer Neighbourhood Team (SNT) in Sheringham. When instances of anti-social behaviour are experienced within Pretty Corner Woods, which usually involves groups of teenagers meeting up in the evening/night time and occasionally lighting fires, then these are reported to the SNT who will subsequently increase their presence on site to help to prevent recurrences. This approach seems to be managing this minor problem well. The team also have annual contact with the Norfolk Fire Service to ensure that all access codes to the site held by the fire service are accurate and up to date in case they need to attend the site. We also review access points and all other fire related questions, concerns and queries.

Control of Dogs

Pretty Corner Woods is used extensively by local people to walk dogs. Dog bins are provided in places of heavy use and where they can be effectively emptied by contractor's staff. Regular checks are made by NNDC Environmental Protection Rangers and interpretation is placed throughout the park to inform visitors to clean up after their dogs. Public land in the district is covered by a Dog Control Order making it an offence for people not to clean up after their dogs. The regulations were introduced under the Clean Neighbourhoods and Environment Act 2005.



In 2020, during times of reduced footfall on site, we unfortunately did see an increase in dog walkers not clearing up after their dogs. Rangers and NNDC's Environmental Protection Rangers increased their presence at the park to try and deter this type of activity whilst also educating visitors at the same time. Social media channels were also used to back up this message and to encourage visitors to take responsibility. These actions had the desired effect and dog mess has since significantly reduced back down the very low levels we have previously seen. We are pleased to report that we continue to receive very few complaints or reports of problems with dogs or owners at this site.

Maintenance of Equipment, Buildings and Landscapes

Litter, Cleanliness, Waste Management and Vandalism

The site is litter picked every two weeks in winter and once a week in the summer, and this frequency helps to keep the site litter free for the vast majority of the time. Two litter bins are situated in each of the car parks for visitors use, and these are emptied twice a week, or upon request, by the Council's waste services contractor Serco. In addition to this we have installed a new double recycling bin in the main car park (Pretty Corner Lane) to allow for recyclable waste to be collected for the first time.

Waste	Frequency of clearance	Removed by contractor.
Litter bins emptied	Twice a week or when necessary.	Serco
Dog bins emptied	When 75% full or when necessary.	Serco
Park litter picked	Once a week in summer or when necessary. Every two weeks in winter.	NNDC Rangers

Pretty Corner Woods does experience some vandalism, ordinarily in the summer months and in the form of camps and fires. All instances of this type of site vandalism and damage are reported to the local SNT who have subsequently increased patrols and their presence on site. This has taken three forms - on foot, in a vehicle and by utilising a drone. We have also utilised our social media channels to encourage local people to report any instances

such as this through the correct channels. Our ranger team and our police contacts use the app *What Three Words* to identify where problems have arisen and where they may arise within the woods. We are pleased to report that instances of vandalism and alike were negligible in 2022.

As our presence on site at Pretty Corner is not as much as our base (Holt Country Park) the team are still considering the idea of introducing Volunteer Woodland Wardens at the site. It was hoped that this idea could be implemented in 2022, however although the paperwork has been written it has yet to be signed off officially. The hope is to have 1 or 2 wardens in place by April/May, with two of the Muddy Boots Volunteers showing an interest already. The basic premise would be for the wardens to keep an eye on the site when they visit, report damage, clear litter and carry out any other pre-agreed tasks such as replenishing leaflets and carrying out transects.

Horticultural Maintenance

Pretty corner woods is a registered county wildlife site and is situated next to Old Wood which is managed by the Woodland Trust. Horticultural management is carried out using a five year management plan which outlines conservation and forestry work for each compartment within the woods. This can be found on the Pretty Corner Woods webpage - [Home | Pretty Corner Woods \(north-norfolk.gov.uk\)](http://north-norfolk.gov.uk)

Utilising the work plan and ongoing guidance from senior members of the countryside team, appropriate work tasks are set each month/week to manage the woodland wildflower rides and grassland areas. Work tasks are adjusted to allow for changing weather, late seasons, wildlife habitats and breeding species. All conservation and grounds maintenance work is carried out by the countryside team, with the help of volunteers on an ad hoc basis where required. Our rangers are qualified to use a variety of machinery, brush cutters, tractors, chainsaws and chippers to maintain the country park, and they utilise conservation management techniques to maintain, protect and enhance wildlife biodiversity and habitats.

Areas around amenities and facilities are maintained for visitors using machinery in a sensitive manner, which has a lower impact on wildlife and which is suited for the time of year so it does less damage. For example we would use brush cutters selectively to cut overgrown grass without cutting the wildflower which are growing within - this can be seen around trail posts where the rangers will use strimmers and be more selective, leaving tussocks of grass and wildflowers for insects, butterflies and bees to use. No grass cutting is carried out within bird nesting season, when butterflies are feeding, breeding and laying eggs on plants, or in wild flower season.

Over the years selective grass cutting for the consideration of wildlife has proven very important. Grassland rides are brush cut in late September or October depending on the season, making sure that wildlife habitats are not disturbed. The cut grass is then raked and collected by the rangers and volunteers and used for reptile and amphibian habitat within the woodlands. Over time this method of grass management has decreased the density of coarse rough grass allowing more wild flower species to grow for the benefit of all.

The countryside team make sure that wild flowers are left until they have gone to seed so that they can naturally seed or be collected for planting. Leaving the grass cutting later in the season is important for reptiles and amphibians using particular areas for habitat. Wildlife habitats are always protected, this is a benefit for visitors who enjoy the variety of wildlife species within the park. Tractor grass cutting is carried out using a compact

tractor with the grass cutting deck set higher to produce a conservation cut. This does not damage the rides, trees or grassland, and prevents areas being cut down to the ground, leaving important wildflower and invertebrate habitats. Selective areas of brambles, stinging nettles, and plant species are left for feeding butterflies, birds and mammals for food. If extra soil is needed, then this is obtained from the local green waste recycling centre, CJC Lee who work in conjunction with North Norfolk District Council. They produce high quality peat free soil conditioner from locally sourced natural material. Soil containing peat is not used anywhere on site.

Significant works have been carried out at Pretty Corner in 2022 to continue this good work, particularly in conjunction with the Muddy Boots volunteers who have created new wildflower rides throughout Pretty Corner Woods. This has opened up the rides to encourage an abundance of wild flowers to grow, whilst also producing a thick shrub layer for nesting birds.

Arboricultural Maintenance

Monitoring, maintenance and management of tree works is carried out by NNDC's ranger team in conjunction with the Council's approved tree services contractor - MJ Tree Services. The Council's tree management contract was re-procured in early 2022.

Regular informal tree surveys are carried out by the rangers, who have tree surveying qualifications, with the aim to highlight the decline, disease and the development of trees in a public space. Professional tree surveys within the woods and on the boundaries are carried out by MJ Tree Services at least every 18 months in order that all trees can be seen in and out of leaf throughout the seasons.

Works which are deemed high risk, require large or specialist machinery, involve climbing, or are situated next to amenities, property and other facilities are carried out by MJ Tree Services as part of their contract with us. All other works are carried out by the ranger team who all hold the relevant qualifications to manage and maintain the trees within the woodland, and all tree work is carried out within the recommendations of the British Standards for Tree Work BS3998 in order to ensure that trees can be maintained and managed for longevity, and to prevent the spread of diseases and pathogens. A high level of Biosecurity is implemented to prevent the spread of disease and pathogens in all NNDC woodlands including Pretty Corner Woods. Tree species for re stocking are sourced from approved suppliers only, and these have been grown in house or are purchased trees which have been grown in the UK and are proven to be free from disease - we do not use non-native species. To further our biosecurity measures we also always ensure that no cross-contamination occurs between the sites which we manage through thorough cleaning of equipment and machinery, and no dumping of plant material from one site to another. Grass cuttings and brash are always left on site and we monitor our sites carefully to ensure that the public do not dispose of their cuttings and alike on our sites.



Woodland management follows the standards and requirements set out in the UK Forestry standard documentation, and is managed taking into consideration the protection of wildlife and their habitats, as well as all legal protection regulations such as TPO, SSSI and protected wildlife species. Habitats, wild flower rides and glades are created for wildlife under the permission of a tree felling licence where the felling of trees is agreed by the Forestry Commission under certain regulations. This advises which species of tree can be felled, in what quantity and where, and outlines requirements of which tree species can be planted for restocking and the necessary density per hectare. The felling licence is valid for ten years from issue and detailed plans have to be submitted and approved before any felling of trees over a certain volume within a wood can occur. Pretty Corner Wood's new felling license was issued in June 2020 and will allow for the future creation of more important

habitats within the woods for wildlife, as well as creating and increasing wildflower rides, and creating glades which have previously been lost by the encroachment of invasive species and lack of management. This also helps reduce competition and shading of species, allowing light and warmth into the woodland, thus creating space for mature species which produce seed for natural regeneration, and increasing the variety of habitats to produce a greater biodiversity of wildlife species.

Pretty corner woods was heavily impacted by a severe storm in September 2020, with many trees of various ages and species wind-blown and damaged, and some others having to be felled due to health and safety concerns. The storm naturally thinned the woods and opened up areas of woodland, however many mature trees were lost which has made a significant impact on the woodland and its future management. The felling licences for Pretty Corner Woods takes into considerations tree species to be selectively thinned and how to create and maintain important wildlife conservation areas within the woodland. As a result of this storm a dense shelter belt of native smaller species of tree is being planted around the perimeter of the woodland, and a thick shelter belt of trees will be planted to protect the woodland above the picnic field to give more protection and future proof this area against similar storms. Areas of Pretty Corner which were damaged by the strong winds in 2020, and areas where diseased trees have had to be removed, have been managed to create new wildflower rides and glades. The rangers have opened up areas along rides for wildflowers to flourish and insects to find a plentiful supply of nectar. A greater biodiversity of tree species have been planted next to the wildflower rides that will provide wildlife with a supply of berries, nectar and nuts, creating a ride of a mixture of grasses, wildflowers, shrubs and trees. The greater diversity of tree species and mix of tree planting within an area will help fight against the spread of disease and pathogens between the same species.

The forestry commission has designed a programme which shows which tree species will be able to survive in the future due to climate change, so tree species within the woodland have been chosen for longevity and that will adapt to climate change to create a resilient and sustainable woodland. A mixture of species will be planted to be resistant towards diseases and pathogens, instead of having single species of tree planting all being lost to

disease, for example Ash die back. Trees will be planted as mixed groups and tree species of a variety of ages encouraged to further sustain the woodland. Ancient and veteran trees are protected and have their own individual management to prolong their life.

Tree guards are used in appropriate areas to protect newly planted trees to prevent them from being eaten by deer and rabbits. Our ranger team now uses biodegradable tree guards across all of our sites. Timber is used by the rangers to make benches, way markers, signs, seats, shelters, flower beds and sculptures for use within the woods.

In 2021 2000 trees were planted at Pretty Corner Woods, whilst in 2022 a further 4100 small native trees have been planted along the edges of the wildflower rides which will provide a good source of food for wildlife. Works also began on a new community tree nursery which will be up and running in 2023. The ground works are complete and the fencing is being installed in February 2023. This will be a fantastic addition to the site and a great resource for the local community. Talks are underway with Sheringham Shed to set up a group to manage and look after the nursery as part of their meetings.



Building and Infrastructure Maintenance

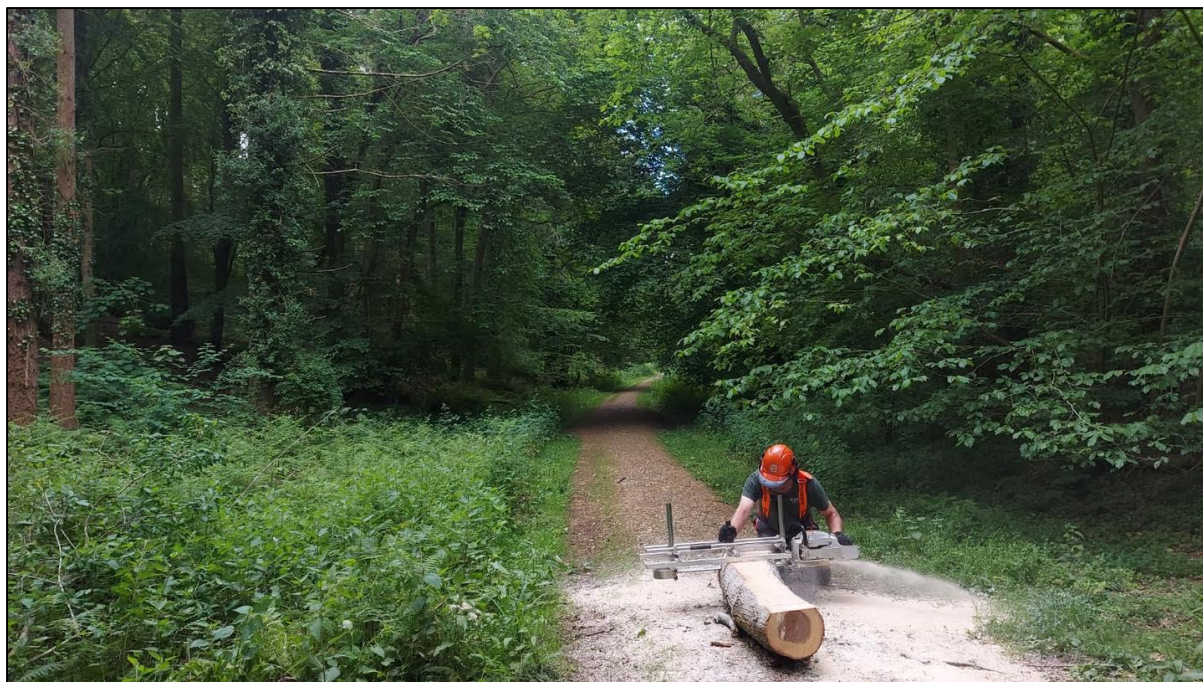
Pretty Corner does not currently benefit from any buildings on site. The infrastructure that exists is spread across the site and includes notice boards, way markers, paths, car parks, a boardwalk, benches and picnic tables. Rangers monitor all infrastructure as part of their management of our sites, carrying out weekly checks and full monthly site inspections. The ranger team will carry out most of the repairs as necessary. Where appropriate the Council's property services team will deal with larger repairs, and these are usually to the aging boardwalk, which has proven to be a particular problem in recent years, and discussions are ongoing about its future management. Pretty Corner Woods is a site which does not have a ranger presence every day and as such we also have the facility on the Council's website for visitors to report damages and defects. In 2022 we installed new welcome signs to replace the very dated old ones.



Equipment Maintenance

Equipment used solely by staff and volunteers is monitored and maintained by the ranger team. All equipment is kept on an inventory which details its condition (amongst other things) and this is updated bi-annually. Equipment which is identified as unsafe or past its usable life, and cannot be fixed or maintained, is condemned and replaced (if required). More significant pieces of equipment such as brush cutters and chainsaws are maintained regularly by the rangers who hold the relevant qualifications to carry out this work, and a maintenance log is kept detailing the maintenance carried out. Where necessary local

firms such as MJ Tree Services and Halls Power are utilised to support this maintenance work. Maintenance of equipment is covered within the relevant risk assessments.



Planking for infrastructure at Pretty Corner Woods

Environmental Management

Managing Environmental Impact

NNDC's Environmental Charter - [environmental-charter-v8-hyperlinks.pdf \(north-norfolk.gov.uk\)](#) states NNDC's commitment to action in order to achieve net-zero carbon emissions by 2030, showing how we will use our own resources wisely to set a direction through our own actions, working with partners and influencing others.

As a service we are supporting this work by investing in measures which increase biodiversity at all of our sites. This includes significant support for the Council's 110,000 tree project and the development of notable wildflower areas.

NNDC Countryside team have worked in conjunction with the 110,000 project team so far by planting trees on four of its woodland sites. With the plan to;

- Increased species diversity of trees to help protect against the threat of disease and pathogens which has been a greater problem in woodlands of fewer tree species.
- Planting trees of different ages, potential heights, densities and trees which are tolerant of shade and light.
- Planting new trees that are more tolerant to climate change. Also planting trees which provide more blossom, pollen and habitat cover for invertebrate species,

birds and mammals. For example, planting trees which are the food plant of certain butterflies.

- To provide woodlands which will help continue sustain future wildlife communities
- Planting trees which will provide beautiful areas of quiet recreation.

Away from the wider environmental charter much work has been carried out on site for the positive benefit of the natural environment, including the provision of habitat piles, bird and bat boxes, and dead hedges to shield certain areas off. We have also created a new pond and mini beast area in the last year. The dead hedging work at Pretty Corner has been met at times with confusion and concern by the public who feel that we are preventing them from using the whole site. We are working hard to get messaging out to support the works and create a local understanding.



Waste Minimisation

Every effort is made to separate general waste from recycling on site by the rangers. In 2021 we installed a new double recycling bin to allow for recyclable waste to be separated by the public for the first time. Within the woodlands waste plant material is turned into compost for re-use, or chipped to make material for paths or mulch around plants.

Chemical Use

Appropriate handling, use and storage of fuel & oil for machinery is considered at all times. Storage containers and any equipment which uses fuel and oil are regularly and thoroughly maintained as part of the team's maintenance schedules. Nothing is stored on site at Pretty Corner.

We do not use pesticides, insecticides or fertiliser within this site at all. In the past sprays had been used for the removal of invasive plant species such as Rhododendron, however these are now removed by hand. This decision was made because using sprays proved to be ineffective, ecological unsound and expensive, instead the roots are dug up and rhododendron destroyed.

The countryside team do not use concrete within conservation areas, if paths need upgrading aggregate is used which is found in the ground below, such as pebbles, flint and sand to stop contamination of the surrounding soil. This then does not change the local pH of the soil which is problematic to the growth of native wild flower species.

Peat Use

Soil containing peat is not used anywhere on site, if extra soil is needed then this is obtained from the local green waste recycling centre, CJC Lee who work in conjunction with North Norfolk District Council. They produce high quality peat free soil conditioner from locally sourced natural material.

Climate Change Adaption Strategies

The forestry commission has designed a programme which shows which tree species will be able to survive in the future due to climate change, so tree species within the woodland

have been chosen for longevity and that will adapt to climate change to create a resilient and sustainable woodland. A mixture of species will be planted to be resistant towards diseases and pathogens, instead of having single species of tree planting all being lost to disease, for example Ash die back. Trees will be planted as mixed groups and tree species of a variety of ages encouraged to further sustain the woodland.

The tree species database is also used to research characteristics of tree species identified for suitable proposed planting.

<https://www.forestresearch.gov.uk/tools-and-resources/tree-species-database/>

The ESC can be used to check species for future climate change scenarios for 2050 and 2080 for a certain location with regards to water holding capacity and different soil types.

<https://www.forestresearch.gov.uk/tools-and-resources/ecological-site-classification-decision-support-system-esc-dss/> .

Woodland material produced from tree felling is used to create invertebrate, amphibian and reptile habitats throughout the woodland, around perimeters of compartments which helps protect important wildlife areas and act as natural wind breaks. Further planting of perimeters and boundaries will help protect the internal woodland from gale force winds which are increasing in number and force within the UK.

As our woodland sites and open spaces are located throughout north Norfolk and have no electricity supply our machinery is run using fuels; diesel, oil and petrol. These pieces of machinery are used to look after large areas of important conservation land, helping to increase wildlife biodiversity of species throughout. We await the day when chainsaw and garden machinery, tractors and work trucks can be designed to use sustainable fuel resources which are robust, work long hours and powerful enough for the task at hand, and we will continue to monitor advances in alternative energy supplies which we can utilise.

Our ranger team choose to work using methods that have the lowest impact on the surrounding environment, whilst remaining effective. Traditional alternatives such as hand tools are used for some operations, and this limits the use of machinery which emits carbon emissions and helps to keep traditional skills alive.

Timber is sourced from trees that have had to be felled within the woodlands and all losses of trees are accounted for within tree planting plans. The recent introduction of NNDC's 110,000 tree planting project has seen over 90,000 trees planted within north Norfolk in the last three years with many more to come in future winters, including the tree nursery and significant planting at Pretty Corner Woods in the coming years.



Muddy Boots Volunteers planting trees at Pretty Corner Woods



Biodiversity, Landscape and Heritage

Management of Natural Features, Wild Fauna and Flora

Pretty Corner contains many common species of flora and fauna which breed and are resident. Their presence on site is fully supported by the ranger's practical management works which seek to protect and enhance their habitats. Wildlife surveys of birds, insects and plant species were carried out in 2022 and are listed below in blue. The rest of the table is made up by other well-known residents of Pretty Corner.

Reptiles	Adders. Grass snakes.
Lizards	Slow worms. Common lizards.
Amphibians	Common newt. Common frog. Common toad.
Butterflies	Large White, Meadow Brown, Ringlet, White Admiral, Red Admiral, Speckled Wood, Silver Washed Fritillary, Silver Washed Fritillary Valezina, Peacock, Purple Hairstreak, Brimstone.
Insects/ mini beasts	Violet Ground Beetle, White Tailed Bumble Bee, Red Tailed Bumble Bee, Biscuit Beetle, Red Soldier Beetle, Stripe-Backed Dasysrphus, Thick Legged Flower Beetle, Money Spider, Nursery Spider, Garden Spider, Woodlouse, Centipede, Tiger Hoverfly, Green Bottle, Scorpion Fly, Southern Hawker, Common Darter
Mammals	Muntjac deer. Wood mouse. Common vole. Common and pigmy shrew. Grey squirrel. Foxes. Common and soprano pipistrelle.
Plants	Pyramidal orchid, Ribwort plantain, Ox eye daisy, Tansy, Yarrow, Ragwort, St John's wort, Clevers, Birds foot trefoil, Cats ear, Oregano, Lesser trefoil, White clover, Doves foot cranes bill, Greater plantain, Cocks foot grass, Common couch grass, Common bent grass, Perennial rye grass, Timothy, Yorkshire fog, Tufted vetch, broadleaf dock, Creeping butter cup, Bindweed, Common nettle, Purple toad flax, Sorrel, Burdock, Hog weed, Red campion, Rough chervil, Rosebay willow herb, Dandelion, Herbrobert, Nipple wort, Wood avens, May weed, Wall barley, Ground ivy, Knot weed, Climbing corydalis, Fiddle dock, Honeysuckle, Wood dock, Enchanters night shade, Broadleaf willow herb, Bluebell, Fox glove, Rough meadow grass, Poppy, White campion, Mallow, Bracken
Birds	Wood pigeon, Buzzard, Red Kite, Tawny Owl, Swift, Herring Gull, Black Cap, Chiff chaff, Great Tit, Blue Tit, Long Tailed Tit, Robin, Wren, Blackbird, Chaffinch, Heron, Kingfisher, Nuthatch, Tree Creeper, Woodcock, Song Thrush, Great Spotted Woodpecker, Magpie, Carrion Crow, Rook, Jay, Gold Crest
Fungi	Stinkhorn. Fly agaric.

The predominantly semi-natural woodland and open glades provide a good habitat for a variety of flora and fauna. There are areas of remnant heathland, particularly on the Woodland Trust land, which provide basking areas for reptiles such as slow worms and common lizards. With our grassland and woodland management we continue to improve our ride edges to increase biodiversity.



Pond

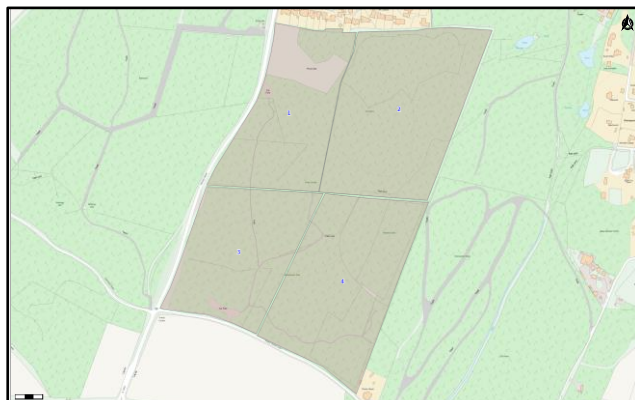


Each year our ranger team carries out agreed works on behalf of The Woodland Trust in Old Wood. Within Old Wood there are 3 ponds and in the next few years conservation management works are scheduled to increase biodiversity, including the removal of duckweed seen here.

Changes in personnel in the Woodland Trust means that we have yet to receive direction on the future management of these, however we expect it to remain much the same.

Pretty Corner Woods is managed using a five-year conservation and woodland management plan. The plan includes forestry operations and re stocking of tree species which correspond with an approved felling license issued by the Forestry Commission. The management plan is reviewed every five years.

Compartment areas and woodland ride maps for woodland and conservation management can be seen below, with a copy of the conservations and woodland management plan for 2023 shown at the end of this document.



Conservation of Landscape Features

The practical conservation and woodland management plan is designed to protect valuable historical raised woodland earth banks and ditches which can be seen throughout the woods. These once marked boundaries and acted to protect valuable areas of planting. The banks and areas of soil and leaf litter are left undisturbed. Historic paths and rights of ways are conserved throughout the woods and not disturbed by grounds management.

A roman quern (wheat grinding stone) was found on top of the hill within the woods. Also pot boiler stones and spigot mortars have been found promoting the importance of conservation in these areas. In 2021 a local metal detector, with permission from NNDC, started to survey some of the site, finding roman coins and a medieval buckle.

Historical areas of planted woodland which contain ancient and veteran trees are protected and managed for longevity. Many of these giants are recognisable land marks

and known to many visitors. Such as the five fingered Oak tree on the boundary of the picnic field. We are allowing these ancient trees to decline with age naturally by hedging around them if they are growing away from main paths, to prevent people passing by too closely and negating the need for the tree to be felled.

One member of our Pretty Corner Woods Volunteer group has taken a great interest in this site and is researching its history. Significant findings from this will be considered for interpretation, and management of areas of the woodland would be reviewed if required.

Conservation of Buildings and Structures

There are no buildings or structures within Pretty Corner Woods or Old Wood which are of any conservation significance. More recent man-made structures which have been introduced to the woods, such as the Owl carving, are maintained regularly to ensure their longevity on site. The removal of the sculpture trail recently has reminded us of the importance of these types of sculptures and structures to visitors, who really do become attached to them. We plan to extend the partnerships we have created with local woodworkers into Pretty Corner to further enhance the sites appeal and interest. Due to the nature of the partnerships it is difficult to put timescales on this work but we hope to be able to introduce at least one new feature/structure within the coming twelve months.

Community Involvement

Community Involvement in Management and Development

Since the introduction of Muddy Boots sessions at Pretty Corner Woods community involvement has thrived. Originally planned as a fortnightly session we have now grown such numbers and interest that we run weekly, with a large group of volunteers attending. In addition to this we have teamed up with Sidestrand Hall - a local SEN school - to welcome their students onto the session each week. This has proven very successful and of great benefit to all involved with new skills being learned, friendships created, isolation combatted and lots of work being carried out!



In 2022 a total of 40 sessions took place helping the rangers with tasks such as tree planting, clearance work, installation of various infrastructure and the creation of a new mini beast/education area, amongst other things. The sessions attracted 446 volunteer visits and provided our service with 892 hours of additional resource. We are extremely grateful for the help, support and enthusiasm of this group, and we know that they are enjoying seeing their efforts make so much difference. Everyone involved is excited to see the improvements which this group can make to Pretty Corner in 2023.

In addition to the Muddy Boots group we will continue to work/partner with the following groups and individuals for the benefit of the site.

Probation Service - Previously known as The Community Payback programme, the Probation Service is utilised by the team for many different tasks, these range from scrub clearance and other practical management works to car park repairs and the installation of trails. We have successfully worked with this scheme for a number of years now, although their return post-covid to full operations only happened in late 2021. In 2022 this service was utilised to help complete the ground preparation works for the new nursery.

Volunteer Ranger - In 2019 NNDC Countryside introduced a new volunteer ranger post to work with the countryside team two days a week. This provides the post holder with valuable work experience and training and the team with an extra person to help with the extensive range of practical work that it has to carry out at Pretty Corner and across all of our other sites. The post is currently vacant, with recruitment set to begin before Easter.

Matt Darge - Following a call for local sculptors and artists to get in touch to discuss possible collaborations Matt got in touch and we have struck up a very successful working relationship. Matt has now provided several carvings for Holt Country Park including recent additions *The Lady of the Wood*, *The Bee & Honeycomb* and *the Tree Themed Totem Pole*. Matt and the team have discussed, and are very keen, for Matt to introduce some carvings into Pretty Corner as a part of our ongoing partnership work, however due to the success of his business we have not yet been able to do this. It is hoped that we will be able to push this through in 2023.

The table below outlines the ideas currently in place whereby further community involvement could be sought. We hope to be able to progress and develop a number of these in the coming 12 months.

Community Group	Details / Involvement
Sheringham Primary	To help with the introduction of an education area within Pretty Corner Woods
Volunteer Group	Develop the now established volunteer group for the benefit of all
Woodland Wardens	To keep an eye on the site and report issues and alike back to the ranger team. Also to litter pick on their visits
Fitness/Health & Wellbeing Groups	To establish regular monitored physical activity and health & wellbeing activities on site
Norfolk Bat Group	To further the good work carried out at Holt Country Park by bringing it to Pretty Corner. The Bat Group undertake an annual survey in the country park and examine the bat boxes notifying us of their observations.
Sheringham Ringer Group	This group are the local representatives of the Hawk and Owl Trust and are licensed to handle birds of prey. Owl and Kestrel nest boxes to be installed and monitored throughout the site and some birds ringed in the interests of research.
Corporate Tree Planting/Volunteer Days	As part of the Council's 110,000 tree planting project Pretty Corner Woods has been identified for planting in winter 2023. We will be calling for corporate volunteer groups to join us to support this effort.
Sheringham Shed	Collaborative work for the benefit of both parties. Possibility to manage the new tree nursery
Mindful Photography sessions	Discussions already taking place about the possibility of organising this for PCW
Forest School	Early conversations have taken place with a potential Forest School provider for PCW

Appropriate Provision for Community

In the past ten years two pieces of community consultation have taken place. In 2012 £150,000 of funding was successfully secured from the Forestry Commission Woodland Improvement Grant, Heritage Lottery Fund, Leader and the Woodland Trust Legacy Fund,

with NNDC providing contributions in kind. Public consultation as part of this process led to the following improvements;

- Resurfacing to both car parks
- High quality path from top car park to viewing point
- Boardwalk to allow easier access down a gradient prone to erosion to Holway Road car park
- Hand carved way marker posts
- Interpretation
- Publicity leaflet production
- Events including a summer fete/festival

In 2021 we carried out user surveys across our three Green Flag sites, including Pretty Corner Woods, to help us understand the areas which should be prioritised with respect to improvements and developments.

Our ranger team has already begun to work through some of these improvements, including improved way marking, increased provision of information, improved signage and maps (see marketing), dog fouling crack down, installation of more benches and plans for more trails. We will also be seeking to carry out another survey for Pretty Corner Woods to gauge up to date visitor thoughts and ideas. The headline results from those who completed the surveys were as follows:

- The vast majority have been visiting the park for over 3 years
- The primary reasons for visiting Pretty Corner Woods are leisure walk, dog walking and enjoying the scenery
- Visitors use Pretty Corner alone or with family members
- People visit the site all year around, with no particular season being more popular than another
- Walking and by car are the only methods utilised by people to get to Pretty Corner - 52% on foot and 48% by car
- The vast majority of visitors live within 15 minutes of the site
- Most visits last between 1 & 2 hours
- The most important site qualities to visitors are wildlife & biodiversity, tranquillity and cleanliness
- The highest rated site qualities were tranquillity, wildlife and biodiversity and car parking facilities
- Areas of consideration for improvement were identified as ease of orientation, on site facilities, seating and interpretation
- Males and females were equally represented in the survey

The headline results from the survey were released via this article - [Home | What do residents like about our Country Parks? \(north-norfolk.gov.uk\)](#) - and the team will be utilising these when considering what improvements to make in 2023 and beyond. It was particularly pleasing to note that the site qualities which people really value also scored highly in terms of how they were rated by our visitors. We are also aware that although a sample size of 50 respondents does give us a good idea of people's thoughts, needs and wishes, it may also not represent all the users of this site. The final question on our survey allowed respondents to give their own comments about Pretty Corner, here are a few:

- *Looks an interesting place to survey as it (nearly) adjoins the common and nearby unimproved countryside. I like the way the dead wood has been left. Some areas*

are dominated by bracken but also some regrowth of wildflowers where there is light.

- It's a lovely site with some amazing views at the right time of year. It is on the whole a very well kept site and I hope it remains this way.*
- Many people avoid going to Pretty Corner as they get lost! Priority MUST be given to way marking especially back to the entrances such as near the waterworks and car parks. I would be happy to help with this to point out where the current map/way marking is confusing.*

As we have already alluded to in this review our Countryside Team will be seeking to make additions, changes and improvements to Pretty Corner Woods in the coming 12 months and beyond, utilising successes from other sites and primary & secondary research to formulate a plan. We still wish to continue to work closely with the Woodland Trust on the site as a whole but recognise that times have changed and the capacity does not necessarily exist to enable us to enter into large scale joint projects. Therefore the focus will be on making small and regular improvements for the benefit of the site and its visitors. We will continue to communicate regularly, and maintain good working relationships, with the Woodland Trust at the same time to ensure that the site as a whole continues to flourish.



Practical management work, carried out by Muddy Boots Volunteers.

Marketing and Communication

Marketing and Promotion

The vision for Pretty Corner Woods (and all other NNDC woodland sites) is to provide a high quality and inspiring visitor experience and a rich biodiversity of wildlife in a sustainable woodland setting, and the site is managed in a way which seeks to ensure that it appeals to as many different user groups as possible, including local residents and holidaying visitors, within the scope of its offer. The Countryside service does not exist to make a profit (although making the service as sustainable as possible is critical) and therefore creating opportunities and a setting which appeals to visitors is the most important thing. We are currently seeking innovative ways by which we are able to monitor site use to be able to gauge visitor numbers, and will be introducing more awareness raising activities and strategies, akin to our other sites, in order to try to increase both awareness and footfall on site. We are aware that many locals appear adverse to change and therefore any developments or changes will need to be handled sensitively.

Appropriate Information Channels

Social Media Accounts

With Holt Country Park providing the main base for the team, social media accounts for the service were set up using this site:

- Facebook /HoltCountryPark
- Twitter @CountryHolt

Site specific social media channels have not been created for Pretty Corner Woods due to capacity issues within the team. It is the team's belief that an underused social media account, which would be difficult to monitor effectively, is of more detriment than support to the site and the service. Therefore Pretty Corner updates are provided via the Holt Country Park accounts, as well as through local community Facebook pages such as 'Enjoy Sheringham More'.

These social media accounts (particularly Facebook) have proven to be a great asset to the park and the service in general, and they are supported by the Council's corporate social media accounts. Since its launch four years ago the park's Facebook page has now attracted 5616 followers (+1293 in the last year) and achieves good engagement throughout the year. Pretty Corner Woods updates are provided periodically during the year. Some examples of social media updates from the recent past include:





Overall we are pleased with the effect that our social media channels have had on our work and will continue to use them as much as we can to promote and inform. We will utilise these more for Pretty Corner as and when improvements are made or proposed.

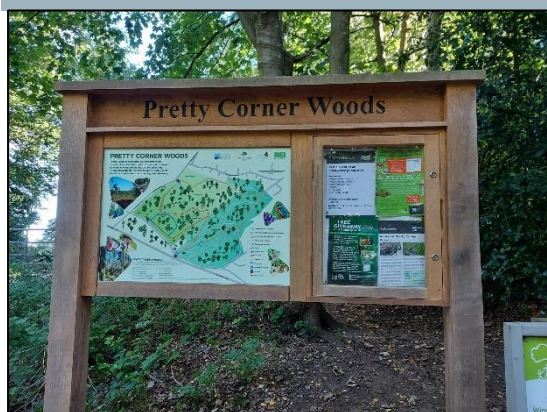
Park maps and interpretation

One of the major improvements completed in recent years was the introduction of a new look site map and flyer. Following the re-introduction of the waymarked trails we arranged for a completely new site map and flyer to be produced by local designer Brendan Rallison.



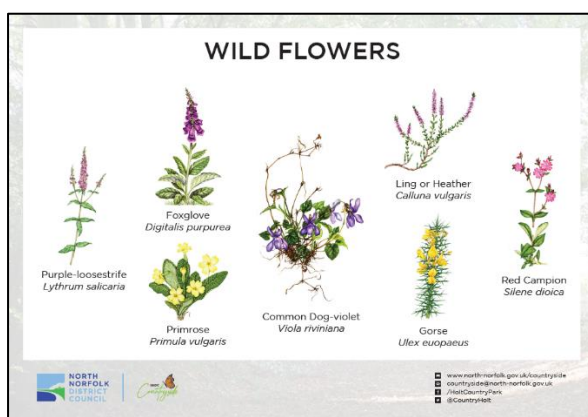
This map and flyer replace the old versions which were introduced a number of years ago and reflect the up to date approach that the team are taking to managing the site. As we continue to develop the site in the coming years we are now also able to easily edit both the flyer and the map to reflect these changes, ensuring that information is kept right up

to date for our visitors. We are delighted with how this has turned out and we have repeated this process at both of our other two Green Flag sites to continue our synergistic approach to management of our Green Flag sites. A copy of the flyer can be found here - pretty-corner-woods-leaflet.pdf (north-norfolk.gov.uk). The map will be updated this year following the installation of the fifth waymarked trail, which is due to be completed in the early part of 2023.



Pretty Corner has also benefitted recently from the installation of a new notice board in each of the car parks. These notice boards include a large copy of the new site map, and room for 4 A4 information posters in a locked compartment which include such things as emergency details, event posters, management information and alike. Site maps are available to visitors from the ranger made flyer 'houses', and all three main entrances to the site have had new welcome signs installed in 2022.

Newly designed interpretation has been installed as planned and in response to the feedback we have received, examples below. This once again supports the consistent management of our three Green Flag sites and has been well received by visitors.



Promotional Flyers

Promotional flyers are utilised on site and on the social media platforms mainly to promote events, of which we have had several in the past twelve months. We believe that these are still a valuable component of our marketing efforts and will continue to use them as and when appropriate. An example from 2022 is shown here:

If required we would be able to start to distribute flyers to a wider and more targeted audience through local schools and clubs, helping to further build our customer base for events.



Webpage [Home](#) | [Pretty Corner Woods \(north-norfolk.gov.uk\)](#)

Each of our Green Flag sites has its own webpage hosted on the Council's website. This provides all the basic information required by visitors and is an important resource to have, particularly for those visitors who do not use social media. In addition to basic park information it also provides links to important resources such as a copy of the site flyer, this annual review, the management plan, events and general site updates.

Appropriate Educational and Interpretational Information

Pretty Corner Woods caters for the educational needs of its visitors effectively within the scope of the site, many of these have been discussed throughout this review and we have summarised many of these below:

School Groups - a mini beast/educational area has been developed on site with the help of our volunteer group in 2022, and with the introduction of the Community Tree Nursery in 2023 it is hoped that links with the local primary school can be made once again.

Facebook/Twitter - Social media is often used to provide educational information about our sites. For example we have posted information about adders in recent years, as well as warnings about the dangers of fires within the woodlands, and explanations of our practical management works.

Events - The vast majority of our events for families are provided with both a fun and educational element. Often a trail will include questions to answer from information boards on the way around.

Interpretation - found in certain spots around the site our interpretation provides information about flora and fauna, as well as some history and other interesting facts. We also try to include temporary interpretation when carrying out certain management work on site to help people understand what work is happening and why. As new trails are introduced we will be seeking to introduce more interpretation to cater for this.

Woodland Trust Website - [Old Wood, Sheringham - Visiting Woods - Woodland Trust](#). Our partners at the Woodland Trust provide site information and education via their own website including trees, plants, fungi, animals and habitats, amongst other more general information. Downloadable activity sheets are also available.

Action Plan

The action plan below outlines the planned works at Pretty Corner Woods in 2023. The plan is based on Green Flag and visitor feedback, corporate aims and objectives, and ranger input. The plan is not exhaustive and remains fluid due to the fast paced and reactive nature of our service and the work we do. Only new or significant works are listed in this plan, with general park management and maintenance being completed by the team as normal alongside this.

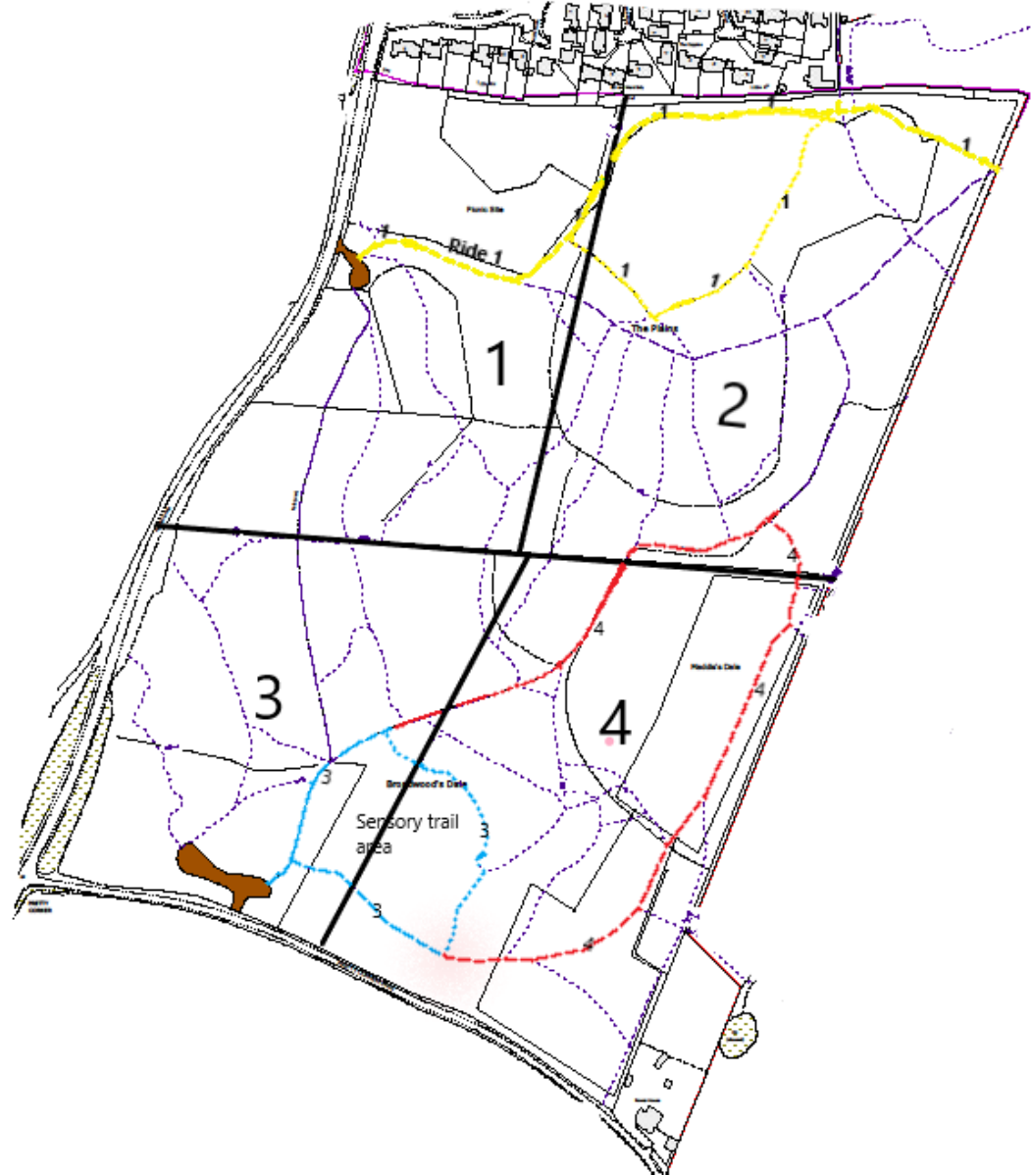
Improvement/Addition	Responsible	Proposed completion
Further wildlife surveys	Rangers/Volunteers	2x in 2023
Improve school/community involvement	CB/AG	End of year
Build on site events	CB/AG	Aug 23
Install more permanent interpretation	Rangers	Jun 23
Install new waymarked trail combining NNDC and Woodland Trust areas.	Rangers/Volunteers	Jun 23
Install quiet seating area in woodland.	Rangers/volunteers	Sept 23
Update map & flyer	CB	Jul 23
Promote muddy boots group to wider audience	AG CB GM	Jul 23
Contact identified community groups	AG	Jul 23
Install minimum of one new sculpture or new feature	All	Dec 23
Plan for future of boardwalk	CB/AG/Property	May 23
Continue to create wildflower and butterfly ride through the woodland as specified within work plan	Rangers/Volunteers	Dec 23
Install tree trail plaques on new trail	Rangers	Sep 23
Tree planting of native species on perimeter of woodland rides and specified within work plan.	Ranger/Volunteers	Winter 23
Community nursery volunteer led	Rangers/Volunteers	Winter 23
Develop relationship with new WT Manager for site	AG/CB	Ongoing

Conservation and Woodland Management Work Plan

Please see conservation and woodland management plan below (2023), for forestry operations and re-stocking please see corresponding tree felling licence.



Pretty corner woods compartment maps 2023. Operations and restocking




COMPARTMENT	YEAR	Ride Number	ACTIVITY/OPERATION 2023
1	2023	1	<p>Brush cutting of amenity areas when required.</p> <p>In winter cut back bramble, bracken, invasive species and maintain to promote wild flower margins. Ride 1.</p> <p>Protect and maintain wild flower margins and areas.</p> <p>Brush cutting of wild flower rides to reduce brambles and encourage wild flowers.</p> <p>Protect and provide habitat areas for/used by amphibians and mini beasts.</p> <p>Control invasive species.</p> <p>Survey flora and fauna species.</p> <p>Maintain boundary hedge of native trees using species as in restocking list around site.</p> <p>Maintain tree planting and replace losses</p> <p>Wild flower sowing and planting where required.</p> <p>Install bat and bird boxes throughout compartment on softwood trees only.</p> <p>Bat survey. Maintain bat and bird boxes throughout compartment on softwood trees only</p> <p>For the outer boundary of NNDC land, compartment 1, plant perimeter with suitable native trees, selective planting away from houses, facilities or access routes. See map. Maintain and replace losses.</p>
1	2023	Picnic field	<p>Protect and maintain wild flower margins and areas.</p> <p>Maintain boundary hedge of native trees using species as in restocking list around site.</p> <p>Maintain tree planting and replace losses.</p> <p>Control invasive plant species.</p> <p>In winter cut back bramble, bracken, invasive species and maintain to promote wild flower margins</p> <p>Survey flora and fauna species.</p> <p>Install bat and bird boxes throughout compartment on softwood trees only.</p> <p>Bat survey. Maintain bat and bird boxes throughout compartment on softwood trees only.</p> <p>For the outer boundary of NNDC land, compartment 1, plant perimeter with suitable native trees, selective planting away from houses, facilities or access routes. See map. Maintain and replace losses.</p> <p>Community nursery.</p>

2	2023	1	<p>Brush cutting of amenity areas when required.</p> <p>Brush cutting of wild flower rides to reduce brambles and encourage wild flowers to spread such as bluebells.</p> <p>Protect and maintain wild flower margins and areas.</p> <p>Maintain boundary hedge of native trees using species as in restocking list around site.</p> <p>Maintain tree planting and replace losses.</p> <p>Survey flora and fauna species.</p> <p>Protect and provide habitat areas for/used by amphibians and mini beasts.</p> <p>In autumn cultivate and re sow the wild flower of ride on right hand side with native wildflower seeds. Please refer to management plan wildflower creation rides. Ride number</p> <p>Control invasive species.</p> <p>Bat survey. Maintain bat and bird boxes throughout compartment, reinstall on softwood trees only.</p> <p>Maintain trees and boundary perimeter hedge of native trees using species as in restocking list around site. Replace losses of trees.</p> <p>Wild flower sowing and planting where required.</p> <p>Install bat and bird boxes throughout compartment on softwood trees only.</p> <p>Maintain wildflower margin, glades beside ride 1.</p> <p>For the outer boundary of NNDC land, compartment 2, plant perimeter with suitable native trees, selective planting away from houses, facilities or access routes. See map. Maintain and replace losses.</p>
3	2023	3	<p>Brush cutting of amenity areas when required.</p> <p>Winter forestry operations as shown within felling licence for compartment 3. Widen ride 3 on one side where suitable (from the main car park) create wildflower margin and glades and sensory area. Selective thinning of trees as shown on the felling licence for pretty corner woods. See ride map.</p> <p>Stack dead wood, branches, timber which cannot be used for firewood or habitats as a dead hedge within the woodland block which makes up the compartment. Stack so that woodland material is not on to the root plate of trees or restricts access for tree surveys. Allowing wild flower margins to establish and not to be covered by woodland material. So that trees can</p>

			<p>be surveyed along the woodland margins do not prevent access around each tree. See details in management plan.</p> <p>On ride 3 between woodland edge of mature trees and edge of wildflower margin plant a thin border of mix species, hawthorn or similar species as stated within felling licence. Protect and maintain trees which have been planted. Replace losses.</p> <p>Native wild flower sowing and planting of plugs if required of wildflower margin. Protect and maintain wild flower margins and areas.</p> <p>In winter cut back bramble, bracken, invasive species and maintain to promote wild flower margin on ride 3</p> <p>Brush cutting of wild flower rides to reduce brambles and encourage wild flowers to spread. Protect and provide habitat areas for/used by amphibians and mini beasts.</p> <p>Control invasive species.</p> <p>Establish and maintain a mini beast conservation area for use for educational mini beast hunts.</p> <p>Survey species, if there is a decline in species, or ground too dry, rest area from use and choose new site for mini beast area within block.</p> <p>Survey flora and fauna species.</p> <p>For the outer boundary of NNDC land, compartment 3, plant perimeter with suitable native trees, selective planting away from houses, facilities or access routes. See map. Maintain and replace losses.</p>
4	2023	4	<p>Brush cutting of amenity areas when required.</p> <p>Winter forestry operations as shown within felling licence for compartment 4. Widen ride 4 on one side where suitable (from the bottom car park) create wildflower margin and glades, sensory area. Selective thinning of trees as shown on the felling licence for pretty corner woods. See ride map.</p> <p>Stack dead wood, branches, timber which cannot be used for firewood or habitats as a dead hedge within the woodland block which makes up the compartment. Stack so that woodland material is not on to the root plate of trees or restricts access for tree surveys. Allowing wild</p>

			<p>flower margins to establish and not to be covered by woodland material. So that trees can be surveyed along the woodland margins do not prevent access around each tree. See details in management plan.</p> <p>On 4 between woodland edge of mature trees and edge of wildflower margin plant a thin border of mix species, hawthorn or similar species as stated within felling licence. Protect and maintain trees which have been planted. Replace losses.</p> <p>Native wild flower sowing and planting of plugs if required of wildflower margin. Protect and maintain wild flower margins and areas. In winter cut back bramble, bracken, invasive species and maintain to promote wild flower margin on ride 4</p> <p>Brush cutting of wild flower rides to reduce brambles and encourage wild flowers to spread. Protect and provide habitat areas for/used by amphibians and mini beasts. Control invasive species. Survey flora and fauna species. For the outer boundary of NNDC land, compartment 4, plant perimeter with suitable native trees, selective planting away from houses, facilities or access routes. See map. Maintain and replace losses.</p>
--	--	--	--

Site Risk Assessment

Risk Assessment	Countryside management	
Service	Countryside & Parks	
Date	December 2022	
Activity	Countryside Management	
Assessor(s)	Anne-Marie Gedge	

Hazard	Who might be harmed & how	Existing Controls	Further Action Required	Justification
Slips, trips and falls				
Footpaths (natural and man-made), fallen branches, steps, ditches etc	Visitors, staff, volunteers.	<p>When working NNDC staff site check, mark / sign routes and diversions of paths where appropriate on WT land.</p> <p>Staff advised of possible hazards in advance of and/or immediately and advice on appropriate PPE.</p> <p>Work checked by senior supervisor, advise staff.</p>	Site checks of work area before start of work, during and after. Reinstatement of ground/area is required to prevent slips, trips and falls.	Regular on-going management of sites.

Hazard	Who might be harmed & how	Existing Controls	Further Action Required	Justification
Poisonous plants and wild animals	Visitors, staff, volunteers. (cuts, bites, abrasions leading to infections and ill health)	<p>Advise staff of potential hazards in advance and/or immediately prior to start of operational works.</p> <p>Warning / educational information about specific plants and animals provided in advance and at time of activity.</p> <p>Wildlife with potential to harm, handled only by trained expert or staff with training.</p> <p>First Aid kit carried.</p> <p>Protected wildlife not to be deliberately injured, harmed or killed. Care taken to protect all wildlife, flora and fauna on site and their habitats.</p>	<p>Identification, marking and control of poisonous plants</p> <p>Additional training for staff for identification of fauna and flora species if required.</p>	On-going and regular assessment and management of sites
Zoonoses Leptospirosis <i>E. coli</i>	Staff, volunteers and visitors	<p>Warning / educational information about specific zoonoses given prior to operational work.</p> <p>Good hygiene practices must be carried out. Particularly at meals.</p> <p>Hand washing facilities or cleansing materials (hand gels) available.</p>	Permission required from land owner to work on ponds and aquatic areas.	Prevent sickness, including food poisoning

Hazard	Who might be harmed & how	Existing Controls	Further Action Required	Justification
		<p>Cuts and grazes covered, particularly when working / studying near water. Correct PPE required for pond management works. No long working of staff in ponds/aquatic areas.</p> <p>Staff required to be in charge of their own health and safety.</p> <p>Mobile phone and first aid kit to hand for emergency. Notify senior staff of working location point.</p>		
Equipment and tools	<p>Staff, volunteers and visitors.</p> <p>Injuries caused by malfunction</p> <p>Injuries caused by misuse</p> <p>Working too close together, make sure there is enough safe</p>	<p>Instruction provided to staff and training on safe use and operation of equipment by staff that are trained to do so.</p> <p>Inspect tools before use - repair or replace defective equipment.</p> <p>Appropriate tool or equipment used for job in hand</p> <p>Tools kept clean and sharp by staff.</p> <p>Care to be taken of blades and cutting edges, training prior to use of equipment by trained staff.</p> <p>PPE provided and to be worn where appropriate (eg gloves, eye protection).</p>	<p>Maintain supervision of activity for damage and misuse.</p> <p>Remove and deactivate defective equipment.</p>	Prevent injury and miss use of tools.

Hazard	Who might be harmed & how	Existing Controls	Further Action Required	Justification
	<p>working distance</p> <p>Scratches and stings from vegetation</p> <p>Blisters</p>	<p>Materials from approved stock and in good working order as to not cause injury.</p> <p>Staff required to be in charge of their own health and safety.</p> <p>Mobile phone and first aid kit to hand for emergency. Notify senior staff of working location point.</p> <p>Volunteers to be supervised at all times by a competent person(s)</p> <p>Do not work within 5m of other(s)</p> <p>Keep public away from working area where possible using hazard tape or appropriate barrier.</p>		
<p>Environmental Hazards</p> <p>Extreme weather issues</p>	<p>Staff, volunteers and visitors.</p>	<p>Weather conditions monitored in advance of work, activity, event.</p> <p>Operational work activity stopped by staff if weather likely to be or becomes hazardous (eg lightning, high winds heavy rain)</p> <p>Remove damaged trees, debris prior to work for safe working areas.</p>	<p>Work operational activity cancelled or reduced in scale if weather too severe. Inform the land owner of any hazards within the woods, removal of trees etc. Changes in landscape.</p>	<p>Safety of staff, visitors and other participants - site conditions may deteriorate.</p>

Hazard	Who might be harmed & how	Existing Controls	Further Action Required	Justification
		<p>Treat / clear ice or snow where necessary.</p> <p>Cancel work/activity if health and safety of participants is at risk under hazards from environmental conditions. Trained staff to decide or ask line managers, health and safety officers.</p>		
Transport Moving vehicles, car parks	Staff, volunteers, visitors.	<p>Ensure parking arrangements free from external hazards. Staff to monitor and manage events, working activities.</p> <p>Staff responsible for own parking, driving on site entering and leaving. Reinstate paths which have been damaged by vehicles which visitors cannot use.</p> <p>Footpaths keep pedestrians away from traffic as best possible. Close off areas to visitors where vehicles are in use for woodland operations.</p> <p>Staff required to be in charge of their own health and safety.</p> <p>Mobile phone and first aid kit to hand for emergency. Notify senior staff of working location point.</p>	<p>Close car park to visitors if woodland operations are deemed to cause hazards within these areas. Staff to monitor and control.</p> <p>Close off working areas to visitors when using vehicles. Re-direct arrows, provide maps if required.</p>	Prevent accidents.

Hazard	Who might be harmed & how	Existing Controls	Further Action Required	Justification
		Do not use vehicles if they are damaged, not operational of the required working safety standard.		
Missing Person(s)	Staff, volunteers, visitors.	<p>Staff aware of each other's location on site at all times. No long working whilst using machinery. Report to senior staff of working location, during of time and when leaving site.</p> <p>Lone working staff, report to senior staff start of work and leaving site, area where they are working. Type of work they are carrying out.</p> <p>Lost child found on site. Looked after by trained staff with appropriate DBS check. Inform the police of loss child if no carer/parent seen. I</p> <p>Missing adults. Inform the police and ask for guidance. Staff to have mobile phones. First aid kit. Inform the police of missing/lost person.</p>	<p>Staff and volunteers aware of location of site, working area. Given maps and pre site check.</p> <p>Maps for visitors.</p> <p>Inform the police of missing/lost persons.</p>	<p>Prevention of missing/lost people.</p> <p>Lost/missing person found.</p>

Hazard	Who might be harmed & how	Existing Controls	Further Action Required	Justification
General, miscellaneous	Staff, visitors, volunteers.	<p>Staff have mobile phone at all times or access to emergency phone number.</p> <p>Weekly sheet in office of staff locations. Senior staff to be aware of colleague general working locations</p> <p>Children must be supervised by an authorised adult at all times - advance notice to parents / supervisors</p> <p>First Aid kit carried at all times where appropriate by trained staff. First Aid to be carried out under the permission of the said person who requires it or person who is authorised. Call 999 in an emergency.</p>	Changes to working schedule to be reported between managers and staff.	Staff and visitor safety.
Litter picking	Staff, volunteers and visitors	<p>Operatives to be adequately instructed in activity by trained staff.</p> <p>Long working, staff to report of start of work, end of work and leaving site and location of works. Every time on site.</p> <p>Gloves to be worn and required PPE.</p> <p>Litter picking tool to be used to minimise picking up objects by hand</p>	Litter picking by volunteers ok but any hazards must be dealt with by trained NNDC staff.	Protect all.

Hazard	Who might be harmed & how	Existing Controls	Further Action Required	Justification
		<p>Frequent litter picking to avoid dealing with large quantities at a time. Bins to be emptied regularly by contractor</p> <p>Only trained staff to use sharps box for safe containment of sharp objects and handling with correct PPE. Contact NNDC Environmental health and report immediately.</p> <p>Rubbish to be contained in bags properly tied and appropriately disposed of. Do not lift bags that are too heavy not person carrying them.</p>		