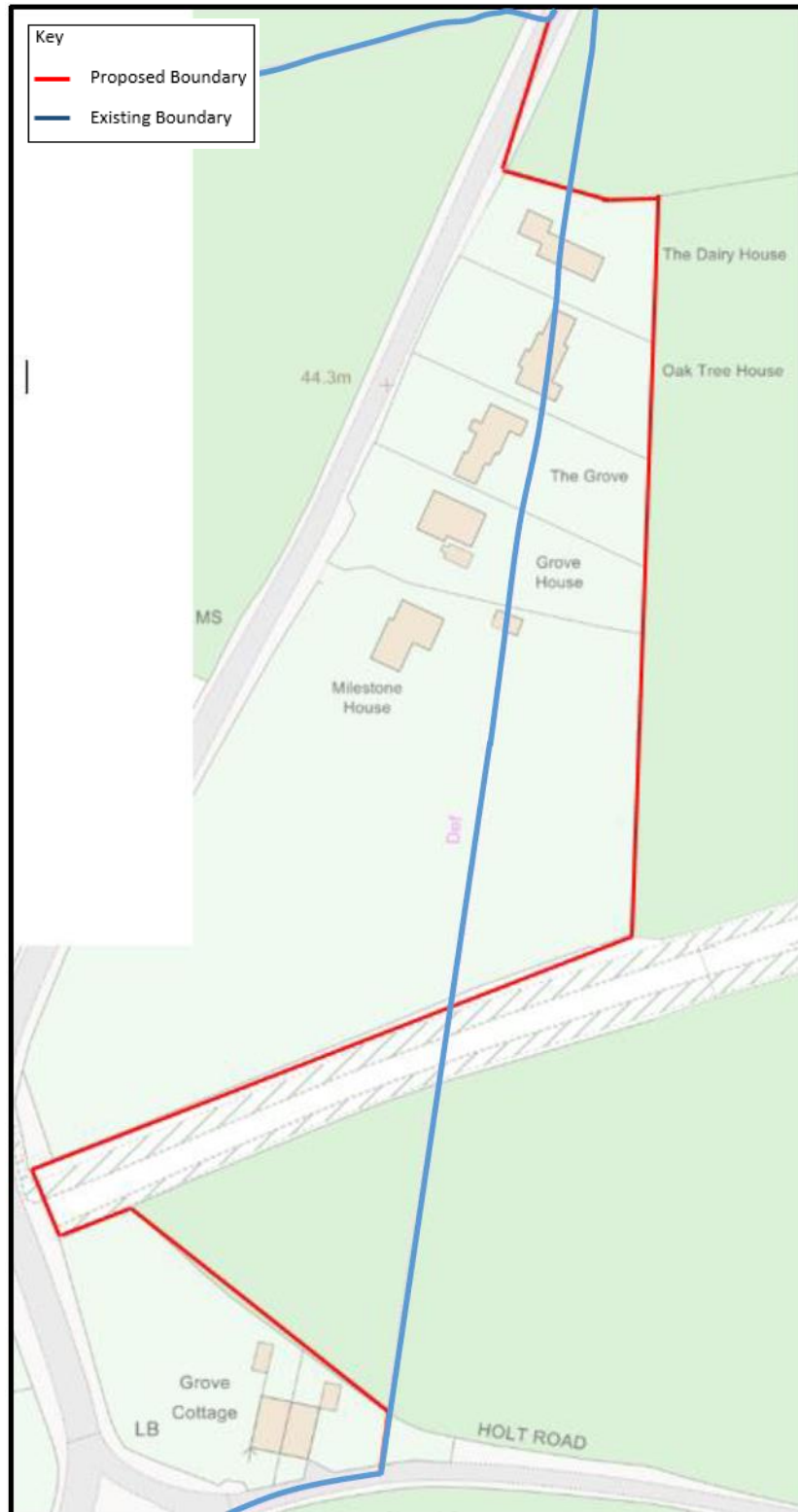


Brinton - Study Boundary Proposal Map



This Review seeks to tidy the historical boundary anomaly at Holt Road, Brinton by moving the boundary line to the rear of The Dairy House, Oak Tree House, The Grove, Grove House and Milestone House so the entire curtilage of each property falls within the parish of Brinton.

There is no effect on any of the properties in terms of Council Tax parish precept or Governance as a result of this change.