

# Tree planting offers 2024-2025

## Norfolk County Council



**Norfolk** County Council



# Subsidised tree pack scheme 24-25

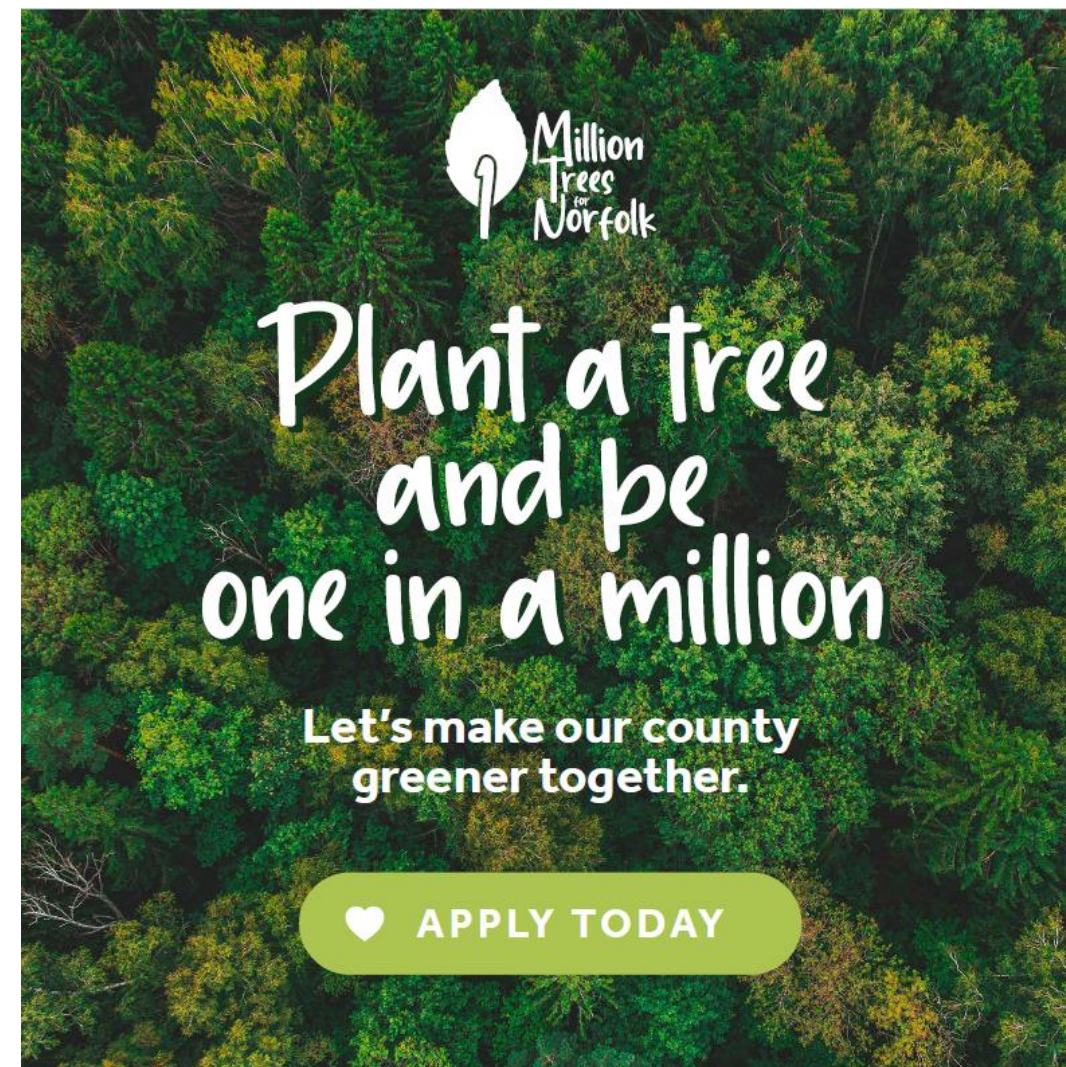
Closing dates of applications	Collection dates
30th October 2024 18th December 2024 22nd January 2025	Saturday 23 <sup>rd</sup> November 2024 Saturday 18 <sup>th</sup> January 2025 Saturday 15 <sup>th</sup> February 2025

## 7 pick-up locations across Norfolk:

- Norwich Broadland Country Park
- Norwich County Hall
- King's Lynn- Gaywood library
- Fakenham- Hawk & Owl Trust
- Watton library
- Acle library
- Long Stratton library

## Tree packs available

Taller trees (packs of 20 or 125 trees)  
Small urban trees (Packs of 10 or 125 trees)  
Hedgerow trees (Packs of 20 or 125 trees)  
Wildlife trees Packs of 20 or 125 trees)  
Orchard trees (Pack of 6 trees)  
Single Norfolk Oak



# Busseys Community tree grant for Norfolk



Private funding from  
local business leader  
Busseys

Anyone in Norfolk who  
has a planting scheme  
with an ongoing benefit  
to the local community  
can apply

Grants supports:

- . Trees
- . Tree protection
- . Delivery costs



Up to £2,500

The grant does not fund:

- Planting labour
- Project staff cost
- Ongoing maintenance such as watering, weed removal



# Woodland creation offer for landowners



NCC has partnered with Norfolk FWAG | Farming & Wildlife Advisory Group for Norfolk

FWAG is offering free advice to landowner wishing to plant more than 0.5ha of woodland

## **For areas over 0.5 ha, FWAG can support:**

More Woods (Woodland Trust) applications to get subsidised planting

## **For areas over 1 ha, FWAG can support :**

EWCO (Forestry Commission) applications to get full funding



# Trees from Gressenhall nursery



Volunteers run Community Tree Nursery at Gressenhall



Sale of whips - either bare root 30cm+ or cell grown 20cm+



Collection from Gressenhall Farm (near Dereham)



Trees are between £1 - £3 depending on the size

Species available this year include:

Alder, Beech, Blackthorn, Crab apple, English oak,  
Horse chestnut,  
Spindle, Sweet chestnut, Rowan

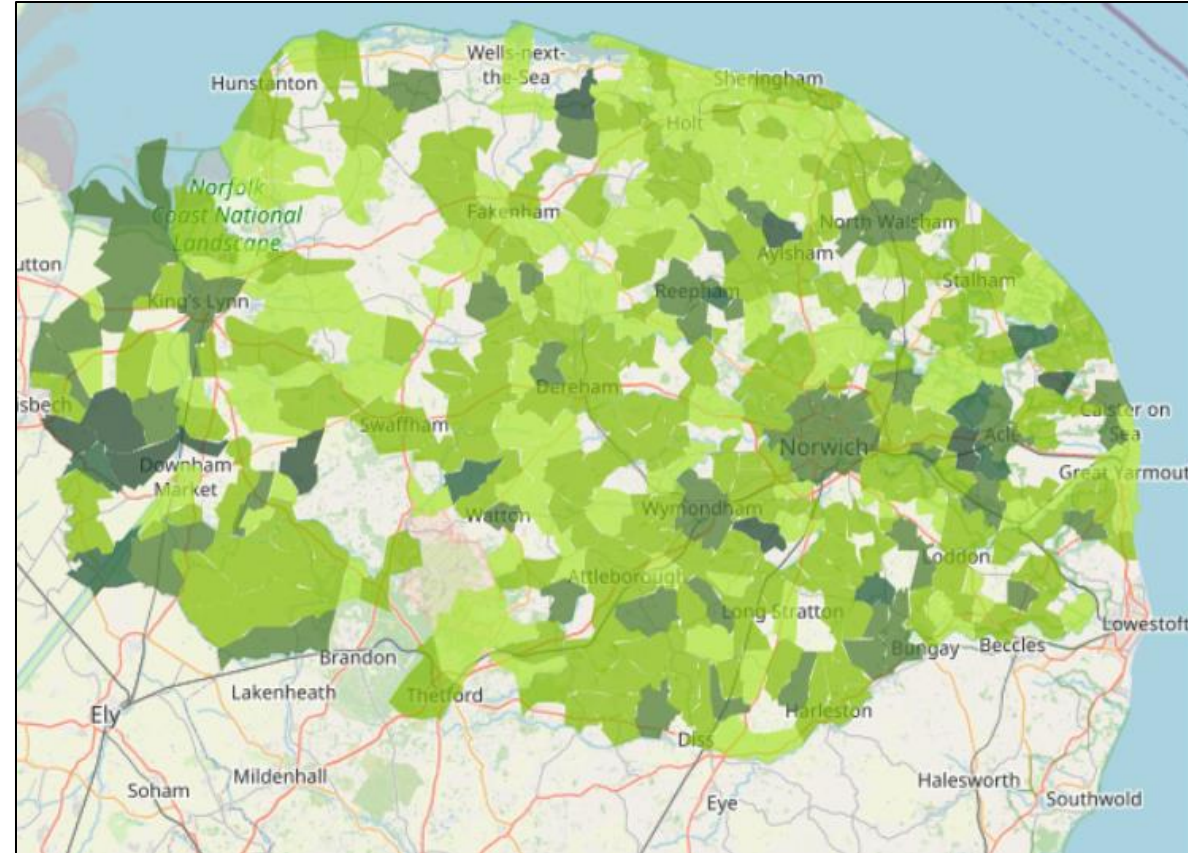


# Tell us where you've planted

## Already planted some trees?

If you've planted any trees or hedges since November 2019, you could be part of Norfolk's 1 Million Trees story by adding to the tree and hedge count

Share your contribution to the 1 Million trees for Norfolk campaign



[www.norfolk.gov.uk/telluswheretheyouveplanted](https://www.norfolk.gov.uk/telluswheretheyouveplanted)



# County councillor contributions

Your county councillor may be able to give you a contribution towards your tree planting activities or fund it all, if you are:

- A community group
- A town or parish council
- Individuals who can prove a 'community benefit'

County councillors have a discretionary £10,000 Highway Member Fund. They can fund highway and environmental work including tree planting and other biodiversity schemes in their area.

Please approach your councillor directly and proceed with any agreements and payments with them.

Find your county councillor by using the link below:

[www.norfolk.gov.uk/countycouncillors](http://www.norfolk.gov.uk/countycouncillors)



# 1 Million Trees for Norfolk

Find out more



All our offers:  
[www.norfolk.gov.uk/currentoffers](http://www.norfolk.gov.uk/currentoffers)



Contact us at  
[Tree.planting@norfolk.gov.uk](mailto:Tree.planting@norfolk.gov.uk)



#1MillionTreesNorfolk